

2022

# SECO TOOLS PRODUCTIVITY KITS



## BUNDLE AND SAVE

**SECO**



**PRODUCTIVITY  
KITS FOR EVERY  
APPLICATION**

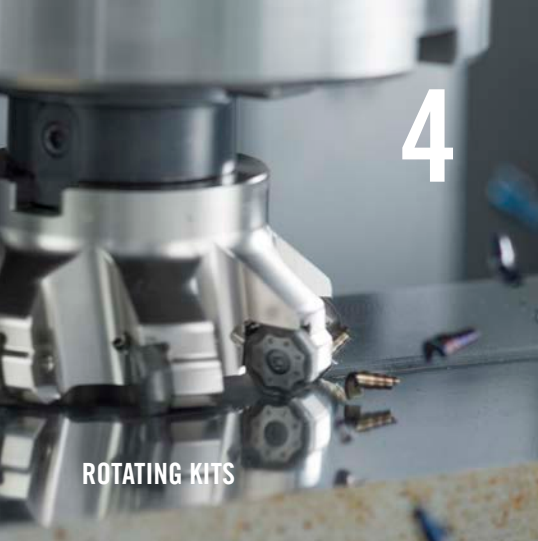
# **SAVE ON INVENTORY COSTS GET PRODUCTIVITY KITS FROM SECO TOOLS**

Save on the tools you use most with these economical Productivity Kits! We have hand selected our most popular end mills, milling cutters, turning tools, and drill bodies with a pack of our best-selling inserts to give you the most aggressive discounts possible.\* Get unbeatably low prices for the tools you know and trust.

To find an authorized Seco Distributor near you,  
please visit [SECOLOCATOR.COM](http://SECOLOCATOR.COM)



\*Pricing is at the discretion of the manufacturer and is subject to change without notice.



4

ROTATING KITS



23

DRILLING / HOLEMAKING KITS



# SECO TOOLS PRODUCTIVITY KITS

## WHAT'S INSIDE



13

SOLID END MILLING KITS



17

STATIONARY KITS

### LOOK INSIDE

#### SQUARE SHOULDER MILLING

|                      |   |
|----------------------|---|
| Square T4 .....      | 5 |
| Square 6™ .....      | 6 |
| Turbo 6 & 10 .....   | 7 |
| Turbo 12 & 16 .....  | 8 |
| Double Turbo 16..... | 9 |

#### FACE MILLING

|                             |    |
|-----------------------------|----|
| Double Quattromill™ 14..... | 10 |
| Quattromill™ 09 & 12 .....  | 11 |

#### HIGH FEED MILLING

|                          |    |
|--------------------------|----|
| High Feed 2, 4, & 6..... | 12 |
|--------------------------|----|

#### SOILD END MILLING - NIAGARA CUTTER™

|                             |    |
|-----------------------------|----|
| Stabilizer™ 2.0.....        | 14 |
| C430 Series .....           | 15 |
| Elite A245/A345 Series..... | 16 |

#### TURNING

|   |    |
|---|----|
| Duratomic® - Steel.....                     | 18 |
| Jetstream Tooling® Duo<br>Superalloys ..... | 19 |

#### MDT, GROOVING & CUT-OFF

|                |    |
|----------------|----|
| MDT & X4 ..... | 20 |
| 150.10.....    | 21 |

#### THREADING

|                          |    |
|--------------------------|----|
| Internal & External..... | 22 |
|--------------------------|----|

#### DRILLING/HOLEMAKING

|                     |    |
|---------------------|----|
| Perfomax®.....      | 24 |
| Feedmax™ -P.....    | 25 |
| Crownloc® Plus..... | 26 |

## BUNDLE & SAVE

Increase your productivity in square shoulder or face milling applications and various materials with rotating kits from Seco Tools.

For a full product range, see our Indexable Milling Machining Navigator or visit: [SECOTOOLS.COM](http://SECOTOOLS.COM)



# SQUARE SHOULDER & FACE MILLING ROTATING KITS





# SQUARE SHOULDER MILLING

## SQUARE T4 KITS

### MAXIMIZE YOUR MILLING SECURITY

The **Square T4** system is a series of square shoulder mills with a tangentially mounted insert offering 4 cutting edges on a 90° square shoulder mill. The tangential insert mounting method provides the strength and stability needed to elevate feed rates.



#### R217/220.94-12 CUTTERS & LOEX INSERTS - MAX DEPTH OF CUT 0.500"

|   | ITEM NUMBER              | KIT DESCRIPTION        | KIT CONTENTS          |      |      |       | KIT PRICE (USD)          | KIT PRICE (CAD) |                  |
|---|--------------------------|------------------------|-----------------------|------|------|-------|--------------------------|-----------------|------------------|
|   |                          |                        | CUTTER                | DIA  | BORE | SHANK |                          |                 | INSERT (10 PCS.) |
| P | <a href="#">03068274</a> | SQUARET4-12 01.00P KIT | R217.94-01.00-3-12-2A | 1.00 | -    | 1.00  | LOEX 120708TR-M12 MP2501 | \$509           | \$642            |
|   | <a href="#">03068275</a> | SQUARET4-12 01.25P KIT | R217.94-01.25-3-12-3A | 1.25 | -    | 1.25  | LOEX 120708TR-M12 MP2501 | \$530           | \$672            |
|   | <a href="#">03068276</a> | SQUARET4-12 01.50P KIT | R220.94-01.50-12-4A   | 1.50 | 0.50 | -     | LOEX 120708TR-M12 MP2501 | \$598           | \$754            |
| M | <a href="#">03068277</a> | SQUARET4-12 02.00P KIT | R220.94-02.00-12-5A   | 2.00 | 0.75 | -     | LOEX 120708TR-M12 MP2501 | \$666           | \$843            |
|   | <a href="#">03068287</a> | SQUARET4-12 01.25M KIT | R217.94-01.25-3-12-3A | 1.25 | -    | 1.25  | LOEX 120708TR-M12 F40M   | \$530           | \$672            |
|   | <a href="#">03068288</a> | SQUARET4-12 01.50M KIT | R220.94-01.50-12-4A   | 1.50 | 0.50 | -     | LOEX 120708TR-M12 F40M   | \$598           | \$754            |
|   | <a href="#">03068289</a> | SQUARET4-12 02.00M KIT | R220.94-02.00-12-5A   | 2.00 | 0.75 | -     | LOEX 120708TR-M12 F40M   | \$666           | \$843            |

Kits include one cutter body, ten inserts, and a wrench

#### FEATURED GRADES

- MP2501
- F40M





# SQUARE SHOULDER MILLING

## SQUARE 6™ KITS

### INCREASE PRODUCTIVITY & COST EFFICIENCY WITH SIX-SIDED INSERTS

The **Square 6** system is a series of square shoulder mills that utilizes a trigon shaped insert offering 6 cutting edges on a 90° square shoulder mill. With six cutting edges, Square 6 is a cost-effective tool for square shoulder milling, face milling and plunging.

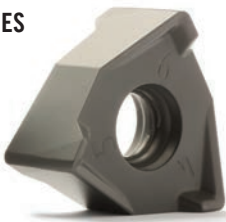
#### R217/220.96-08 CUTTERS & XNEX INSERTS - MAX DEPTH OF CUT 0.295"

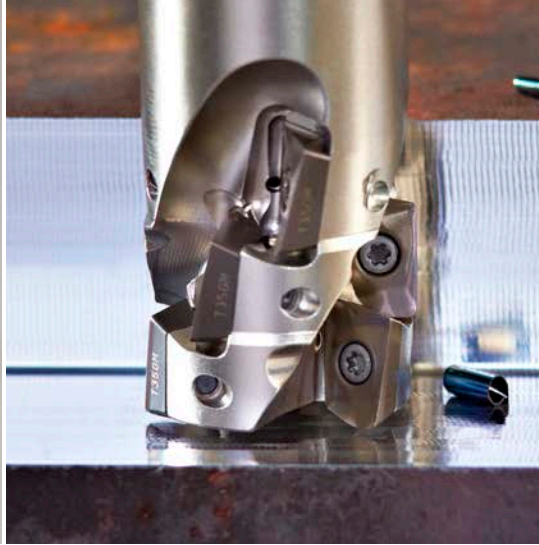
|   | ITEM NUMBER              | KIT DESCRIPTION     | KIT CONTENTS          |       |       |       | KIT PRICE (USD)          | KIT PRICE (CAD) |                  |
|---|--------------------------|---------------------|-----------------------|-------|-------|-------|--------------------------|-----------------|------------------|
|   |                          |                     | CUTTER                | DIA   | BORE  | SHANK |                          |                 | INSERT (10 PCS.) |
| P | <a href="#">02693015</a> | SQUARE6-08 1.5P KIT | R217.96-01.50-3-08-3A | 1.500 | -     | 1.250 | XNEX 080608TR-M13 MP2501 | \$497           | \$631            |
|   | <a href="#">02693016</a> | SQUARE6-08 2.0P KIT | R220.96-02.00-08-5A   | 2.000 | 0.750 | -     | XNEX 080608TR-M13 MP2501 | \$565           | \$713            |
|   | <a href="#">02693018</a> | SQUARE6-08 3.0P KIT | R220.96-03.00-08-7A   | 3.000 | 1.000 | -     | XNEX 080608TR-M13 MP2501 | \$751           | \$947            |
|   | <a href="#">02693019</a> | SQUARE6-08 4.0P KIT | R220.96-04.00-08-8A   | 4.000 | 1.000 | -     | XNEX 080608TR-M13 MP2501 | \$847           | \$1,080          |
| M | <a href="#">02693020</a> | SQUARE6-08 1.5M KIT | R217.96-01.50-3-08-3A | 1.500 | -     | 1.250 | XNEX 080608R-M08 F40M    | \$497           | \$631            |
|   | <a href="#">02693021</a> | SQUARE6-08 2.0M KIT | R220.96-02.00-08-5A   | 2.000 | 0.750 | -     | XNEX 080608R-M08 F40M    | \$565           | \$713            |
|   | <a href="#">02693023</a> | SQUARE6-08 3.0M KIT | R220.96-03.00-08-7A   | 3.000 | 1.000 | -     | XNEX 080608R-M08 F40M    | \$751           | \$947            |
|   | <a href="#">02693024</a> | SQUARE6-08 4.0M KIT | R220.96-04.00-08-8A   | 4.000 | 1.000 | -     | XNEX 080608R-M08 F40M    | \$847           | \$1,080          |

Kits include one cutter body, ten inserts, and a wrench

#### FEATURED GRADES

- MP2501
- F40M





# SQUARE SHOULDER MILLING

## TURBO 6 & 10 KITS

### PEAK PERFORMANCE IN LIGHT TO MEDIUM-DUTY OPERATIONS

Optimize your cutting properties with Seco's Turbo family of cutters that reduce heat generation and cutting forces. These cutters are available in a variety of configurations, all with copy milled pockets for insert stability and two pitch configurations to tackle almost every material. For small diameter square shoulder milling, **Turbo 6** will meet your needs, while the **Turbo 10** is your answer for light-duty high-precision applications. Both solutions can perform multiple milling functions, including ramping and helical interpolation.



#### R220.69-06 CUTTERS & XOMX INSERTS - MAX PROFILING DEPTH OF CUT 0.197"

|   | ITEM NUMBER              | KIT DESCRIPTION  | KIT CONTENTS            |       |       |                       | KIT PRICE (USD) | KIT PRICE (CAD) |
|---|--------------------------|------------------|-------------------------|-------|-------|-----------------------|-----------------|-----------------|
|   |                          |                  | CUTTER                  | DIA   | SHANK | INSERT (10 PCS.)      |                 |                 |
| P | <a href="#">02504118</a> | TURBO6 .375P KIT | R217.69-00.375-0-06-2AN | 0.750 | 0.375 | XOMX 060208R-M05 F40M | \$300           | \$376           |
|   | <a href="#">02504119</a> | TURBO6 .500P KIT | R217.69-00.500-0-06-3AN | 0.500 | 0.500 | XOMX 060208R-M05 F40M | \$311           | \$395           |
|   | <a href="#">02504120</a> | TURBO6 .625P KIT | R217.69-00.625-0-06-4AN | 0.625 | 0.625 | XOMX 060208R-M05 F40M | \$367           | \$465           |
|   | <a href="#">02504121</a> | TURBO6 .750P KIT | R217.69-00.75-0-06-5AN  | 0.750 | 0.750 | XOMX 060208R-M05 F40M | \$362           | \$460           |

#### R217.69-10 CUTTERS & XOMX/XOEX INSERTS - MAX PROFILING DEPTH OF CUT 0.354"

|   | ITEM NUMBER              | KIT DESCRIPTION   | KIT CONTENTS           |       |       |                          | KIT PRICE (USD) | KIT PRICE (CAD) |
|---|--------------------------|-------------------|------------------------|-------|-------|--------------------------|-----------------|-----------------|
|   |                          |                   | CUTTER                 | DIA   | SHANK | INSERT (10 PCS.)         |                 |                 |
| P | <a href="#">02840165</a> | TURBO10 .625P KIT | R217.69-00.625-3-10-2A | 0.625 | 0.625 | XOMX 10T308TR-M09 MP2501 | \$356           | \$448           |
|   | <a href="#">02840166</a> | TURBO10 .750P KIT | R217.69-00.750-3-10-2A | 0.750 | 0.750 | XOMX 10T308TR-M09 MP2501 | \$367           | \$465           |
|   | <a href="#">02840167</a> | TURBO10 1.00P KIT | R217.69-01.00-3-10-4A  | 1.000 | 1.000 | XOMX 10T308TR-M09 MP2501 | \$407           | \$513           |
| M | <a href="#">02840170</a> | TURBO10 .625M KIT | R217.69-00.625-3-10-2A | 0.625 | 0.625 | XOEX 10T308R-M06 F40M    | \$379           | \$478           |
|   | <a href="#">02840171</a> | TURBO10 .750M KIT | R217.69-00.750-3-10-2A | 0.750 | 0.750 | XOEX 10T308R-M06 F40M    | \$396           | \$500           |
|   | <a href="#">02840172</a> | TURBO10 1.00M KIT | R217.69-01.00-3-10-4A  | 1.000 | 1.000 | XOEX 10T308R-M06 F40M    | \$430           | \$542           |

Kits include one cutter body, ten inserts, and a wrench

#### FEATURED GRADES

- MP2501
- F40M



# SQUARE SHOULDER MILLING

## TURBO 12 & 16 KITS



### HIGH PERFORMANCE MILLING IN LARGER DEPTH APPLICATIONS

**Turbo 12** is the first-choice cutter for general-purpose square shoulder milling applications. The Turbo 12 is ideal in all applications from low carbon steels to high-temp alloys.

Reduce your power consumption, improve wall quality, get higher performance in sticky materials and increase ramp angles with the latest insert and pocket design of the **Turbo 16** cutters.



#### R217/220.69-12 CUTTERS & XOMX/XOEX INSERTS - MAX PROFILING DEPTH OF CUT 0.433"

|   | ITEM NUMBER | KIT DESCRIPTION    | KIT CONTENTS           |       |      |       |                          | KIT PRICE (USD) | KIT PRICE (CAD) |
|---|-------------|--------------------|------------------------|-------|------|-------|--------------------------|-----------------|-----------------|
|   |             |                    | CUTTER                 | DIA   | BORE | SHANK | INSERT (10 PCS.)         |                 |                 |
| P | 02628260    | TURBO 12 .750P KIT | R217.69-00.75-3-12-2AN | 0.750 | -    | 0.750 | XOMX 120408TR-M12 MP2501 | \$374           | \$472           |
|   | 02628263    | TURBO 12 1.00P KIT | R217.69-01.00-3-12-3AN | 1.000 | -    | 1.000 | XOMX 120408TR-M12 MP2501 | \$396           | \$500           |
|   | 02628266    | TURBO 12 1.25P KIT | R217.69-01.25-3-12-4AN | 1.250 | -    | 1.250 | XOMX 120408TR-M12 MP2501 | \$401           | \$506           |
|   | 03019949    | TURBO 12 1.50P KIT | R220.69-01.50-12-4AN   | 1.500 | -    | 1.500 | XOMX 120408TR-M12 MP2501 | \$464           | \$582           |
| M | 02628261    | TURBO 12 .750M KIT | R217.69-00.75-3-12-2AN | 0.750 | -    | 0.750 | XOEX 120408R-M07 F40M    | \$418           | \$530           |
|   | 02628264    | TURBO 12 1.00M KIT | R217.69-01.00-3-12-3AN | 1.000 | -    | 1.000 | XOEX 120408R-M07 F40M    | \$423           | \$536           |
|   | 02628267    | TURBO 12 1.25M KIT | R217.69-01.25-3-12-4AN | 1.250 | -    | 1.250 | XOEX 120408R-M07 F40M    | \$430           | \$542           |
|   | 03019952    | TURBO 12 1.50M KIT | R220.69-01.50-12-4AN   | 1.500 | -    | 1.500 | XOEX 120408R-M07 F40M    | \$491           | \$618           |

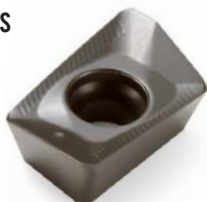
Kits include one cutter body, ten inserts, and a wrench

#### R217/220.69-16 CUTTERS & XOMX INSERTS - MAX PROFILING DEPTH OF CUT = 0.491"

| ITEM NUMBER | KIT DESCRIPTION    | KIT CONTENTS            |      |      |       |                         | KIT PRICE (USD) | KIT PRICE (CAD) |
|-------------|--------------------|-------------------------|------|------|-------|-------------------------|-----------------|-----------------|
|             |                    | CUTTER                  | DIA  | BORE | SHANK | INSERT (10 PCS.)        |                 |                 |
| 10084223    | TURBO 16 1.00P KIT | R217.69-01.00-3-X016-2A | 1.00 | -    | 1.00  | XOMX160508TR-M13 MP2501 | \$453           | \$538           |
| 10084224    | TURBO 16 1.25P KIT | R217.69-01.25-3-X016-3A | 1.25 | -    | 1.25  | XOMX160508TR-M13 MP2501 | \$474           | \$564           |
| 10084225    | TURBO 16 1.50P KIT | R217.69-01.50-3-X016-3A | 1.50 | -    | 1.50  | XOMX160508TR-M13 MP2501 | \$489           | \$579           |
| 10084226    | TURBO 16 2.00P KIT | R220.69-02.00-X016-5A   | 2.00 | 0.75 | -     | XOMX160508TR-M13 MP2501 | \$613           | \$724           |
| 10084227    | TURBO 16 2.50P KIT | R220.69-02.50-X016-5A   | 2.50 | 0.75 | -     | XOMX160508TR-M13 MP2501 | \$670           | \$791           |
| 10084228    | TURBO 16 3.00P KIT | R220.69-03.00-X016-6A   | 3.00 | 1.00 | -     | XOMX160508TR-M13 MP2501 | \$757           | \$894           |
| 10084229    | TURBO 16 1.00M KIT | R217.69-01.00-3-X016-2A | 1.00 | -    | 1.00  | XOMX160508TR-ME11 F40M  | \$448           | \$533           |
| 10084230    | TURBO 16 1.25M KIT | R217.69-01.25-3-X016-3A | 1.25 | -    | 1.25  | XOMX160508TR-ME11 F40M  | \$469           | \$553           |
| 10084231    | TURBO 16 1.50M KIT | R217.69-01.50-3-X016-3A | 1.50 | -    | 1.50  | XOMX160508TR-ME11 F40M  | \$484           | \$574           |
| 10084232    | TURBO 16 2.00M KIT | R220.69-02.00-X016-5A   | 2.00 | 0.75 | -     | XOMX160508TR-ME11 F40M  | \$608           | \$719           |
| 10084233    | TURBO 16 2.50M KIT | R220.69-02.50-X016-5A   | 2.50 | 0.75 | -     | XOMX160508TR-ME11 F40M  | \$664           | \$786           |
| 10084234    | TURBO 16 3.00M KIT | R220.69-03.00-X016-6A   | 3.00 | 1.00 | -     | XOMX160508TR-ME11 F40M  | \$747           | \$884           |

#### FEATURED GRADES

- MP2501
- F40M







## DOUBLE THE EDGES FOR IMPROVED PRODUCTIVITY

Achieve significant cost per edge savings with the 4 cutting edges of the double-sided Turbo. Use the most positive helix cutting angle geometry on the market for lower power consumption, smoother cutting and longer tool life. Together with high 90° angle accuracy and double-sided inserts, this generates a good surface finish and optimizes costs.

With precise geometry, the **Double Turbo 16** insert provides efficient chip evacuation and significantly reduces the generation of workpiece burrs, especially in steel, stainless steel, and titanium part applications. The insert cuts with less force so vibrations are minimized leading to extended tool life and smoother surface finish.

### R217/R220.64-16 CUTTERS & ZOMX INSERTS - MAX PROFILING DEPTH OF CUT = 0.591"

| ITEM NUMBER              | KIT DESCRIPTION        | KIT CONTENTS            |      |      |       |                          | KIT PRICE (USD) | KIT PRICE (CAD) |
|--------------------------|------------------------|-------------------------|------|------|-------|--------------------------|-----------------|-----------------|
|                          |                        | CUTTER                  | DIA  | BORE | SHANK | INSERT (10 PCS.)         |                 |                 |
| <a href="#">10083600</a> | DBLETURBO 16 1.25P KIT | R217.64-01.25-3-Z016-2A | 1.25 | -    | 1.25  | ZOMX160708TR-M12, MP2501 | \$536           | \$636           |
| <a href="#">10015595</a> | DBLETURBO 16 1.50P KIT | R217.64-01.50-3-Z016-3A | 1.50 | -    | 1.50  | ZOMX160708TR-M12, MP2501 | \$577           | \$682           |
| <a href="#">10015596</a> | DBLETURBO 16 2.00P KIT | R220.64-02.00-Z016-4A   | 2.00 | 0.75 | -     | ZOMX160708TR-M12, MP2501 | \$685           | \$812           |
| <a href="#">10015604</a> | DBLETURBO 16 2.50P KIT | R220.64-02.50-Z016-5A   | 2.50 | 0.75 | -     | ZOMX160708TR-M12, MP2501 | \$767           | \$910           |
| <a href="#">10015597</a> | DBLETURBO 16 3.00P KIT | R220.64-03.00-Z016-6A   | 3.00 | 1.00 | -     | ZOMX160708TR-M12, MP2501 | \$855           | \$1,010         |
| <a href="#">10083604</a> | DBLETURBO 16 1.25M KIT | R217.64-01.25-3-Z016-2A | 1.25 | -    | 1.25  | ZOMX160708TR-ME10, F40M  | \$525           | \$620           |
| <a href="#">10015599</a> | DBLETURBO 16 1.50M KIT | R217.64-01.50-3-Z016-3A | 1.50 | -    | 1.50  | ZOMX160708TR-ME10, F40M  | \$572           | \$677           |
| <a href="#">10015600</a> | DBLETURBO 16 2.00M KIT | R220.64-02.00-Z016-4A   | 2.00 | 0.75 | -     | ZOMX160708TR-ME10, F40M  | \$680           | \$807           |
| <a href="#">10015601</a> | DBLETURBO 16 2.50M KIT | R220.64-02.50-Z016-5A   | 2.50 | 0.75 | -     | ZOMX160708TR-ME10, F40M  | \$757           | \$894           |
| <a href="#">10015602</a> | DBLETURBO 16 3.00M KIT | R220.64-03.00-Z016-6A   | 3.00 | 1.00 | -     | ZOMX160708TR-ME10, F40M  | \$850           | \$1,010         |

### FEATURED GRADES

- MP2501
- F40M





## REDUCE CUTTING FORCES & INCREASE DEPTH OF CUT

Maximize machine output and gain lower cost per cutting edge thanks to the double-sided, eight-edged inserts of the **Double Quattromill 14** face milling cutter. The specially developed and extremely free-cutting insert geometries lower cutting forces and require less machine power while also ensuring workpiece stability. Simplify processes and reduce inventory with these cost-effective double-sided inserts.



### R220.54 CUTTERS & SNMX INSERTS - MAX DEPTH OF CUT 0.236"

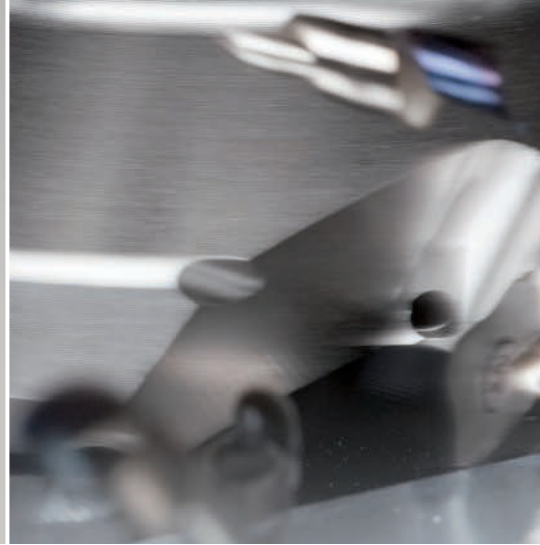
|   | ITEM NUMBER              | KIT DESCRIPTION | KIT CONTENTS        |      |       |                           | KIT PRICE (USD) | KIT PRICE (CAD) |
|---|--------------------------|-----------------|---------------------|------|-------|---------------------------|-----------------|-----------------|
|   |                          |                 | CUTTER              | DIA  | ARBOR | INSERTS (10 PCS)          |                 |                 |
| P | <a href="#">03273426</a> | DQ14 2.00P KIT  | R220.54-02.00-14-4A | 2.00 | 0.75  | SNMX 1407ANTR-M10, MP2501 | \$710           | \$926           |
|   | <a href="#">03273427</a> | DQ14 2.50P KIT  | R220.54-02.50-14-5A | 2.50 | 0.75  | SNMX 1407ANTR-M10, MP2501 | \$808           | \$1,050         |
|   | <a href="#">03273428</a> | DQ14 3.00P KIT  | R220.54-03.00-14-6A | 3.00 | 1.00  | SNMX 1407ANTR-M10, MP2501 | \$895           | \$1,170         |
|   | <a href="#">03273429</a> | DQ14 4.00P KIT  | R220.54-04.00-14-7A | 4.00 | 1.50  | SNMX 1407ANTR-M10, MP2501 | \$1,050         | \$1,380         |
| M | <a href="#">03273431</a> | DQ14 2.00M KIT  | R220.54-02.00-14-4A | 2.00 | 0.75  | SNMX 1407ANTR-M10, F40M   | \$710           | \$926           |
|   | <a href="#">03273432</a> | DQ14 2.50M KIT  | R220.54-02.50-14-5A | 2.50 | 0.75  | SNMX 1407ANTR-M10, F40M   | \$808           | \$1,050         |
|   | <a href="#">03273433</a> | DQ14 3.00M KIT  | R220.54-03.00-14-6A | 3.00 | 1.00  | SNMX 1407ANTR-M10, F40M   | \$895           | \$1,170         |
|   | <a href="#">03273434</a> | DQ14 4.00M KIT  | R220.54-04.00-14-7A | 4.00 | 1.50  | SNMX 1407ANTR-M10, F40M   | \$1,050         | \$1,380         |

Kit includes one cutter body, ten inserts, and a wrench

### FEATURED GRADES

- MP2501
- F40M





## ENJOY FREE CUTTING CAPABILITY IN ALL MATERIALS

Excel in any machining conditions with the **Quattromill 09 & 12**. It's free cutting design and wide range of inserts create excellent surface finished in all workpiece materials. All Quattromill cutter bodies are coated for longer tool life, and their strong, square inserts are easy to index. The Quattromill 09 diameter range begins at 1.50" and is ideal for precision machining on light duty machines. Quattromill 12 increases depth of cut due to insert size for higher feed and metal removal rates.



### R220.53-09 CUTTERS & SEMX/SEEX INSERTS - MAX DEPTH OF CUT 0.18"

|   | ITEM NUMBER | KIT DESCRIPTION      | KIT CONTENTS        |      |      |                         | KIT PRICE (USD) | KIT PRICE (CAD) |
|---|-------------|----------------------|---------------------|------|------|-------------------------|-----------------|-----------------|
|   |             |                      | CUTTER              | DIA  | BORE | INSERT (10 PCS.)        |                 |                 |
| P | 02628712    | QUATTRO-09 1.50P KIT | R220.53-01.50-09-4A | 1.50 | 0.75 | SEMX 09T3AFN-M08 MP2501 | \$497           | \$619           |
|   | 02628713    | QUATTRO-09 2.00P KIT | R220.53-02.00-09-5A | 2.00 | 0.75 | SEMX 09T3AFN-M08 MP2501 | \$519           | \$647           |
| M | 02628717    | QUATTRO-09 1.50M KIT | R220.53-01.50-09-4A | 1.50 | 0.75 | SEEX 09T3AFN-M05 F40M   | \$514           | \$636           |
|   | 02628718    | QUATTRO-09 2.00M KIT | R220.53-02.00-09-5A | 2.00 | 0.75 | SEEX 09T3AFN-M05 F40M   | \$538           | \$665           |

### R220.53-12 CUTTERS & SEMX/SEEX INSERTS - MAX DEPTH OF CUT 0.236"

|   | ITEM NUMBER | KIT DESCRIPTION      | KIT CONTENTS        |      |      |                         | KIT PRICE (USD) | KIT PRICE (CAD) |
|---|-------------|----------------------|---------------------|------|------|-------------------------|-----------------|-----------------|
|   |             |                      | CUTTER              | DIA  | BORE | INSERT (10 PCS.)        |                 |                 |
| P | 02629027    | QUATTRO-12 2.00P KIT | R220.53-02.00-12-4A | 2.00 | 0.75 | SEMX 1204AFN-M15 MP2501 | \$587           | \$728           |
|   | 02629031    | QUATTRO-12 3.00P KIT | R220.53-03.00-12-6A | 3.00 | 1.00 | SEMX 1204AFN-M15 MP2501 | \$734           | \$914           |
| M | 02629035    | QUATTRO-12 2.00M KIT | R220.53-02.00-12-4A | 2.00 | 0.75 | SEEX 1204AFN-M08 F40M   | \$616           | \$763           |
|   | 02629039    | QUATTRO-12 3.00M KIT | R220.53-03.00-12-6A | 3.00 | 1.00 | SEEX 1204AFN-M08 F40M   | \$763           | \$948           |

Kits include one cutter body, ten inserts, and a wrench

### FEATURED GRADES

- MP2501
- F40M





# FACE MILLING

## HIGH FEED 2, 4, & 6 KITS

### GAIN IMPROVED ECONOMY IN HIGH FEED MILLING

Machine up to three times faster than conventional methods. Pairing shallow depth of cut with high feed per tooth increases metal removal rates resulting in more parts being machined. The **High Feed 2** comes in two insert sizes and is single sided. The diameter range begins as small as 0.500" and is excellent in all materials. The **High Feed 4** offers four cutting edges which provides an economical solution while still offering a robust way to machine fast. This diameter range begins at 1.00". The **High Feed 6** range offers an economical double-sided insert with 6 cutting edges and can handle up to 0.070" axial depth of cut for incomparable material removal and low operating costs. The diameter range begins at 2.00".

#### FEATURED GRADES

- MP2501
- F40M



#### HIGH FEED 2

|   | ITEM NUMBER | KIT DESCRIPTION     | KIT CONTENTS            |       |      |       |                           | KIT PRICE (USD) | KIT PRICE (CAD) |
|---|-------------|---------------------|-------------------------|-------|------|-------|---------------------------|-----------------|-----------------|
|   |             |                     | CUTTER                  | DIA   | BORE | SHANK | INSERT (10 PCS.)          |                 |                 |
| P | 02874480    | HIGHFEED2 .625P KIT | R217.21-0.625.0-LP06.2A | 0.625 | -    | 0.625 | LPHW 060310TR-MD07 MP2501 | \$328           | \$408           |
|   | 02874481    | HIGHFEED2 .750P KIT | R217.21-0.75.0-LP06.2A  | 0.750 | -    | 0.750 | LPHW 060310TR-MD07 MP2501 | \$340           | \$427           |
|   | 02874482    | HIGHFEED2 1.00P KIT | R217.21-1.00.0-LP06.3A  | 1.000 | -    | 1.000 | LPHW 060310TR-MD07 MP2501 | \$374           | \$467           |
| M | 02874483    | HIGHFEED2 .625M KIT | R217.21-0.625.0-LP06.2A | 0.625 | -    | 0.625 | LPHT 060310TR-M06 F40M    | \$328           | \$408           |
|   | 02874484    | HIGHFEED2 .750M KIT | R217.21-0.75.0-LP06.2A  | 0.750 | -    | 0.750 | LPHT 060310TR-M06 F40M    | \$340           | \$427           |
|   | 02874516    | HIGHFEED2 1.00M KIT | R217.21-1.00.0-LP06.3A  | 1.000 | -    | 1.000 | LPHT 060310TR-M06 F40M    | \$374           | \$467           |

#### HIGH FEED 4

|   | ITEM NUMBER | KIT DESCRIPTION     | KIT CONTENTS           |       |       |       |                          | KIT PRICE (USD) | KIT PRICE (CAD) |
|---|-------------|---------------------|------------------------|-------|-------|-------|--------------------------|-----------------|-----------------|
|   |             |                     | CUTTER                 | DIA   | BORE  | SHANK | INSERT (10 PCS.)         |                 |                 |
| P | 03019976    | HIGHFEED4 1.00P KIT | R217.21-1.00.0-L006-3A | 1.000 | -     | 1.000 | LOHT 060310TR-M07 MP2501 | \$430           | \$537           |
|   | 03019982    | HIGHFEED4 2.00P KIT | R220.21-02.00-L006-8A  | 2.000 | 0.750 | -     | LOHT 060310TR-M07 MP2501 | \$565           | \$706           |
| M | 03019985    | HIGHFEED4 1.00M KIT | R217.21-1.00.0-L006-3A | 1.000 | -     | 1.000 | LOHT 060310TR-ME06 F40M  | \$430           | \$537           |
|   | 03019988    | HIGHFEED4 2.00M KIT | R220.21-02.00-L006-8A  | 2.000 | 0.750 | -     | LOHT 060310TR-ME06 F40M  | \$565           | \$706           |

#### HIGH FEED 6

|   | ITEM NUMBER | KIT DESCRIPTION     | KIT CONTENTS          |      |      |                      |                  | KIT PRICE (USD) | KIT PRICE (CAD) |
|---|-------------|---------------------|-----------------------|------|------|----------------------|------------------|-----------------|-----------------|
|   |             |                     | CUTTER                | DIA  | BORE | SHANK                | INSERT (10 PCS.) |                 |                 |
| P | 03112750    | HIGHFEED6 2.00P KIT | R220.21-02.00-R230-4A | 2.00 | 0.75 | 218.21-230TR-06-M15  | MP2501           | \$577           | \$678           |
|   | 03112752    | HIGHFEED6 3.00P KIT | R220.21-03.00-R230-5A | 3.00 | 1.00 | 218.21-230TR-06-M15  | MP2501           | \$712           | \$841           |
| M | 03112754    | HIGHFEED6 2.00M KIT | R220.21-02.00-R230-4A | 2.00 | 0.75 | 218.21-230TR-06-ME13 | F40M             | \$577           | \$678           |
|   | 03112756    | HIGHFEED6 3.00M KIT | R220.21-03.00-R230-5A | 3.00 | 1.00 | 218.21-230TR-06-ME13 | F40M             | \$712           | \$841           |

Kits include one cutter body, ten inserts, and a wrench



## BUNDLE & SAVE

Increase your productivity in various solid end milling applications and materials with Niagara Cutter's solid end milling kits.

For a full product range visit:  
[NIAGARACUTTER.COM](http://NIAGARACUTTER.COM)

# NIAGARA CUTTER™ SOLID END MILLING KITS



**Niagara Cutter**  
A SECO TOOLS COMPANY



# SOLID END MILLING

## NIAGARA CUTTER™ STABILIZER™ 2.0 KITS

### DOUBLE YOUR METAL REMOVAL

The **Stabilizer 2.0** family of end mills raises the bar in high performance milling by incorporating a patented continuously varying asymmetrical geometry which helps create a smooth chatter free milling condition. The **ST430.2** Stabilizer 2.0 series are specifically designed for machining steels, alloy steels, copper alloys and cast iron. While the **ST440.2** series are designed for machining ISO-S materials such as stainless steel, steels over 42 Rc, titanium and Inconel. These configurations, along with a specially engineered flute shape, allows for double the feed rates.

- COATING**
- AlTiN



#### STR430.2 RADIUS END MILL - SLOTTING PARAMETERS AT 1 X D

| ITEM NUMBER | KIT DESCRIPTION         | END MILLS                   | ITEM NUMBER | FLUTE DIA | SHANK DIA | LENGTH OF CUT | OVERALL LENGTH | STEEL (SMG P3-P4) |            | CAST IRON (SMG K1-K4) |            | KIT PRICE (USD) | KIT PRICE (CAD) |
|-------------|-------------------------|-----------------------------|-------------|-----------|-----------|---------------|----------------|-------------------|------------|-----------------------|------------|-----------------|-----------------|
|             |                         |                             |             |           |           |               |                | RPM               | FEED (IPM) | RPM                   | FEED (IPM) |                 |                 |
| 02941954    | 6PACKSTR430.2STAB ALTiN | STR430.2-0.125-D2-R010.0-Z4 | N09778      | 1/8       | 1/8       | 1/4           | 1-1/2          | 12,224            | 35         | 10,696                | 30         | \$182           | \$226           |
|             |                         | STR430.2-0.188-D2-R010.0-Z4 | N09786      | 3/16      | 3/16      | 3/8           | 2              | 8,127             | 35         | 7,110                 | 30         |                 |                 |
|             |                         | STR430.2-0.250-D2-R020.0-Z4 | N09794      | 1/4       | 1/4       | 1/2           | 2-1/2          | 6,112             | 35         | 5,348                 | 30         |                 |                 |
|             |                         | STR430.2-0.313-D2-R020.0-Z4 | N09802      | 5/16      | 5/16      | 5/8           | 2-1/2          | 4,881             | 35         | 4,270                 | 30         |                 |                 |
|             |                         | STR430.2-0.375-D2-R020.3-Z4 | N09807      | 3/8       | 3/8       | 3/4           | 2-1/2          | 4,075             | 35         | 3,565                 | 30         |                 |                 |
|             |                         | STR430.2-0.500-D2-R030.3-Z4 | N09845      | 1/2       | 1/2       | 1             | 3              | 3,056             | 35         | 2,674                 | 30         |                 |                 |

#### STS430.2 SQUARE END MILL - SLOTTING PARAMETERS AT 1 X D

| ITEM NUMBER | KIT DESCRIPTION         | END MILLS                | ITEM NUMBER | FLUTE DIA | SHANK DIA | LENGTH OF CUT | OVERALL LENGTH | STEEL (SMG P3-P4) |            | CAST IRON (SMG K1-K4) |            | KIT PRICE (USD) | KIT PRICE (CAD) |
|-------------|-------------------------|--------------------------|-------------|-----------|-----------|---------------|----------------|-------------------|------------|-----------------------|------------|-----------------|-----------------|
|             |                         |                          |             |           |           |               |                | RPM               | FEED (IPM) | RPM                   | FEED (IPM) |                 |                 |
| 03145208    | 6PACKSTS430.2STAB ALTiN | STS430.2-0.125-D2-S.0-Z4 | N09697      | 1/8       | 1/8       | 1/4           | 1-1/2          | 12,224            | 35         | 10,696                | 30         | \$182           | \$226           |
|             |                         | STS430.2-0.188-D2-S.0-Z4 | N09705      | 3/16      | 3/16      | 3/8           | 2              | 8,127             | 35         | 7,110                 | 30         |                 |                 |
|             |                         | STS430.2-0.250-D2-S.0-Z4 | N09713      | 1/4       | 1/4       | 1/2           | 2-1/2          | 6,112             | 35         | 5,348                 | 30         |                 |                 |
|             |                         | STS430.2-0.313-D2-S.0-Z4 | N09719      | 5/16      | 5/16      | 5/8           | 2-1/2          | 4,881             | 35         | 4,270                 | 30         |                 |                 |
|             |                         | STS430.2-0.375-D2-S.3-Z4 | N09726      | 3/8       | 3/8       | 3/4           | 2-1/2          | 4,075             | 35         | 3,565                 | 30         |                 |                 |
|             |                         | STS430.2-0.500-D2-S.3-Z4 | N09742      | 1/2       | 1/2       | 1             | 3              | 3,056             | 35         | 2,674                 | 30         |                 |                 |

#### STR440.2 RADIUS END MILL - SLOTTING PARAMETERS AT 1 X D

| ITEM NUMBER | KIT DESCRIPTION            | END MILLS                   | ITEM NUMBER | FLUTE DIA | SHANK DIA | LENGTH OF CUT | OVERALL LENGTH | TITANIUM (SMG S12) |            | STAINLESS STEEL (SMG M1-M2) |            | KIT PRICE (USD) | KIT PRICE (CAD) |
|-------------|----------------------------|-----------------------------|-------------|-----------|-----------|---------------|----------------|--------------------|------------|-----------------------------|------------|-----------------|-----------------|
|             |                            |                             |             |           |           |               |                | RPM                | FEED (IPM) | RPM                         | FEED (IPM) |                 |                 |
| 02941959    | 6 PACK STR440.2 STAB ALTiN | STR440.2-0.125-D2-R010.0-Z4 | N09883      | 1/8       | 1/8       | 1/4           | 1-1/2          | 5,654              | 14         | 11,307                      | 34         | \$182           | \$226           |
|             |                            | STR440.2-0.188-D2-R010.0-Z4 | N09889      | 3/16      | 3/16      | 3/8           | 2              | 3,759              | 14         | 7,515                       | 34         |                 |                 |
|             |                            | STR440.2-0.250-D2-R020.0-Z4 | N09897      | 1/4       | 1/4       | 1/2           | 2-1/2          | 2,827              | 14         | 5,654                       | 34         |                 |                 |
|             |                            | STR440.2-0.313-D2-R020.0-Z4 | N09905      | 5/16      | 5/16      | 5/8           | 2-1/2          | 2,257              | 14         | 4,515                       | 34         |                 |                 |
|             |                            | STR440.2-0.375-D2-R020.3-Z4 | N09912      | 3/8       | 3/8       | 3/4           | 2-1/2          | 1,885              | 14         | 3,769                       | 34         |                 |                 |
|             |                            | STR440.2-0.500-D2-R030.3-Z4 | N09948      | 1/2       | 1/2       | 1             | 3              | 1,413              | 14         | 2,827                       | 34         |                 |                 |

Kits include six end mills

For cutting data recommendations and more visit: [NIAGARACUTTER.COM](http://NIAGARACUTTER.COM)



**Niagara Cutter**  
A SECO TOOLS COMPANY



# SOLID END MILLING

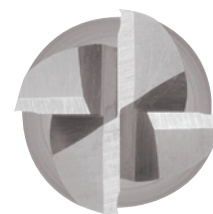
## NIAGARA CUTTER™ GENERAL PURPOSE C430 SERIES KITS

### REDUCE YOUR INVENTORY COSTS

The Niagara Cutter **General Purpose C430 Series** solid carbide end mills come equipped with four precision ground flutes that a variety of metal removal applications. Coupled with a TiAlN coating, these general purpose end mills outperform many traditional cutting tools. The C series is offered in a range that is best fit for any job shop environment. This single tool can replace the use of multiple tools for increased productivity, tool life and cost reduction. The C series of Niagara end mills also comes in a two and three flute option.

- 30° Helix
- Square End
- Center Cutting

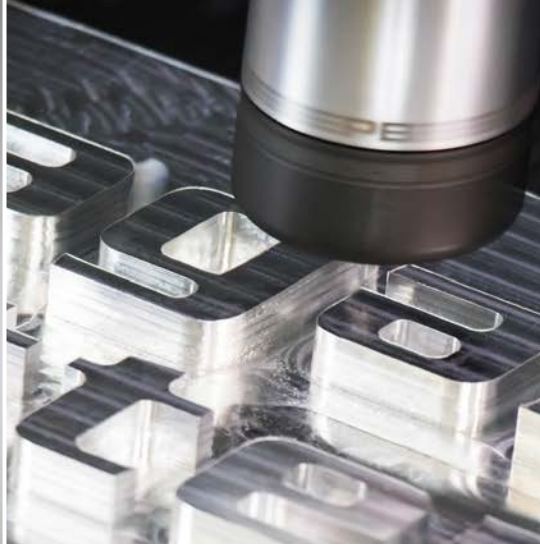
**COATING**  
• TiAlN



### C430 SERIES

| ITEM NUMBER              | KIT DESCRIPTION       | END MILLS                  | ITEM NUMBER | FLUTE DIA | SHANK DIA | LENGTH OF CUT | OVERALL LENGTH | KIT PRICE (USD) | KIT PRICE (CAD) |
|--------------------------|-----------------------|----------------------------|-------------|-----------|-----------|---------------|----------------|-----------------|-----------------|
| <a href="#">03031083</a> | 6 PACK C430 GEN TIALN | C430-0.188-D3-S.0-Z4 TIALN | N85590      | 3/16      | 3/16      | 5/8           | 2              | \$153           | \$191           |
|                          |                       | C430-0.250-D3-S.0-Z4 TIALN | N85594      | 1/4       | 1/4       | 3/4           | 2-1/2          |                 |                 |
|                          |                       | C430-0.313-D3-S.0-Z4 TIALN | N85598      | 5/16      | 5/16      | 13/16         | 2-1/2          |                 |                 |
|                          |                       | C430-0.375-D2-S.0-Z4 TIALN | N85602      | 3/8       | 3/8       | 1             | 2-1/2          |                 |                 |
|                          |                       | C430-0.500-D2-S.0-Z4 TIALN | N85610      | 1/2       | 1/2       | 1             | 3              |                 |                 |
|                          |                       | C430-0.625-D2-S.0-Z4 TIALN | N85612      | 5/8       | 5/8       | 1-1/4         | 3-1/2          |                 |                 |

Kits include six end mills



# SOLID END MILLING

## NIAGARA CUTTER™ ELITE A245/A345 SERIES KITS

### MAXIMIZE YOUR NON-FERROUS MILLING PRODUCTIVITY

Machining non-ferrous materials like aluminum, brass, copper, and other ISO-N materials allow manufacturers to push their machines to the limit and achieve the highest metal removal rates (MRR). Push past those limits and achieve higher MRR, even with older and less rigid machines – with the upgraded family of **A245/A345** solid carbide end mills from Niagara Cutter.

These products feature a polished K-land and optimized flute shape to control chip formation and reduce friction. Paired with a new proprietary Niagara Cutter ANF (aluminum non-ferrous) PVD coating with the smoothness needed to minimize built-up edge. As a result, manufacturers can reduce cutting forces and power consumption by a minimum of 20%!

- Reduced power consumption
- Increased cutting efficiency
- Improved chip evacuation
- Superior workpiece surface finish
- Increased tool life
- Boost process stability

#### COATING

- ANF



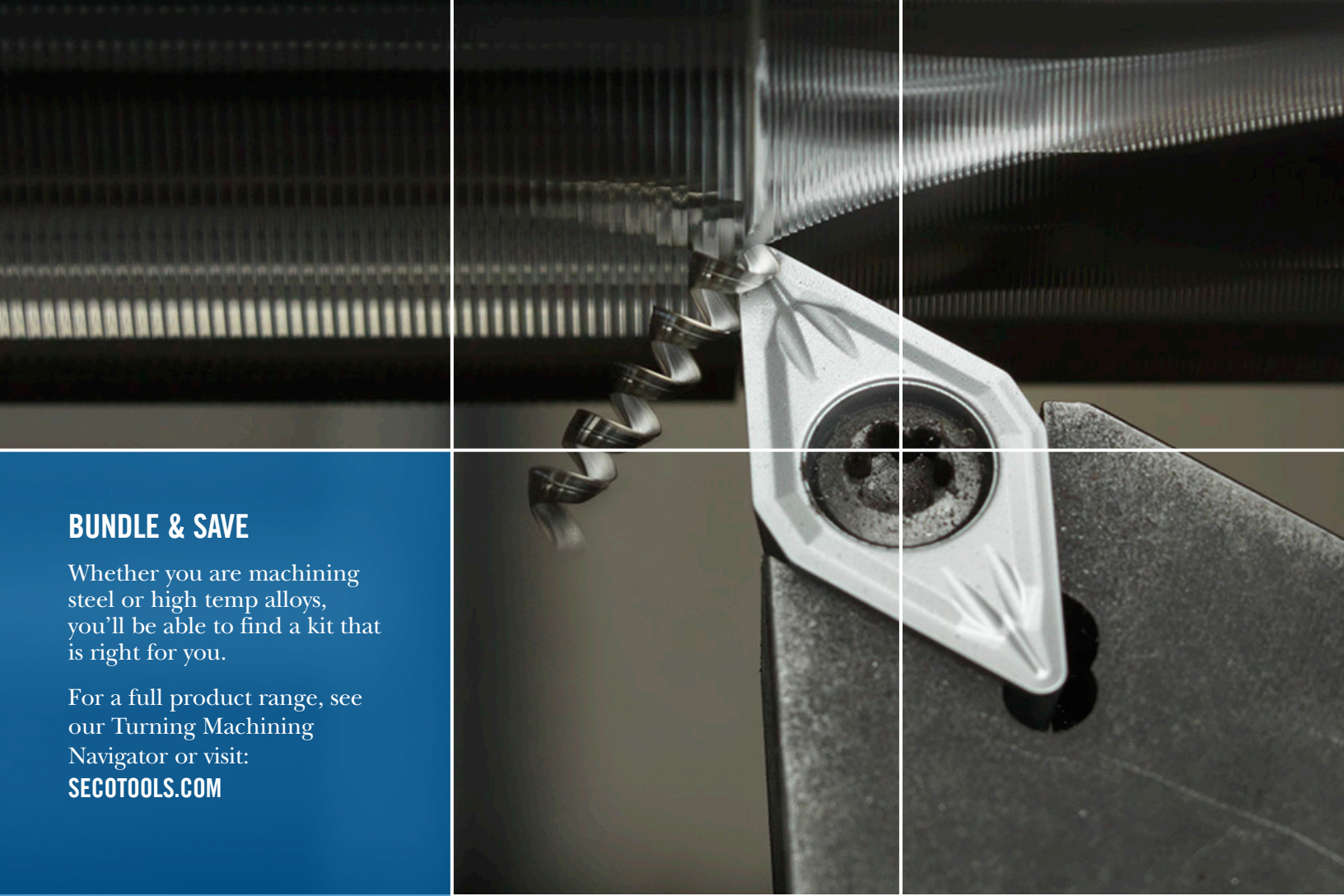
### A345 SERIES

| ITEM NUMBER              | KIT DESCRIPTION       | END MILLS            | ITEM NUMBER | FLUTE DIA | SHANK DIA | LENGTH OF CUT | OVERALL LENGTH | KIT PRICE (USD) | KIT PRICE (CAD) |
|--------------------------|-----------------------|----------------------|-------------|-----------|-----------|---------------|----------------|-----------------|-----------------|
| <a href="#">03031092</a> | 6 PACK A345 ELITE ANF | A345-0.125-D3-S.0-Z3 | 10023002    | 1/8       | 1/8       | 3/8           | 1-1/2          | \$182           | \$226           |
|                          |                       | A345-0.188-D3-S.0-Z3 | 10023006    | 3/16      | 3/16      | 9/16          | 2              |                 |                 |
|                          |                       | A345-0.250-D3-S.0-Z3 | 10023009    | 1/4       | 1/4       | 3/4           | 2-1/2          |                 |                 |
|                          |                       | A345-0.313-D3-S.0-Z3 | 10023012    | 5/16      | 5/16      | 13/16         | 2-1/2          |                 |                 |
|                          |                       | A345-0.375-D3-S.0-Z3 | 10023016    | 3/8       | 3/8       | 1             | 2-1/2          |                 |                 |
|                          |                       | A345-0.500-D3-S.0-Z3 | 10023020    | 1/2       | 1/2       | 1-1/4         | 3              |                 |                 |

Kits include six end mills







## BUNDLE & SAVE

Whether you are machining steel or high temp alloys, you'll be able to find a kit that is right for you.

For a full product range, see our Turning Machining Navigator or visit:

[SECOTOOLS.COM](http://SECOTOOLS.COM)

# TURNING, GROOVING, THREADING, & CUT-OFF STATIONARY KITS



# TURNING

## DURATOMIC® STEEL KITS

### NEVER WASTE ANOTHER INSERT WITH USED EDGE DETECTION

Featuring **Duratomic** chrome technology, these steel turning kits are now available in three grades, including TP1501, TP2501, and TP3501. Advanced geometries for general machining and profiling and a 1.0” toolholder ensure you can find what you need. The “D” style holders draw inserts down and back into the pocket for more secure insert holding.

#### FEATURED GRADES

- TP3501
- TP2501
- TP1501



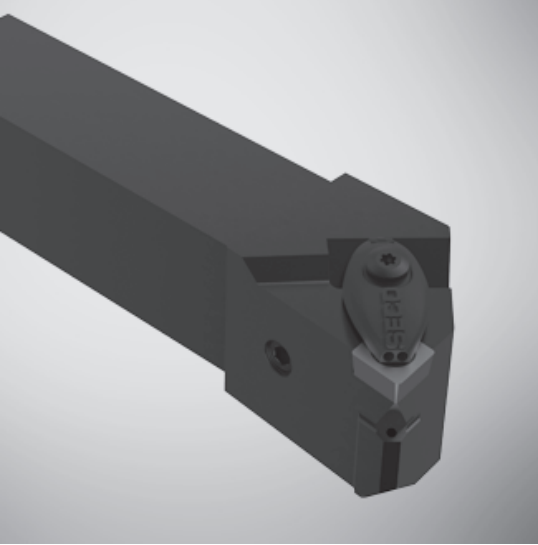
#### 1.0” RIGHT & LEFT HAND TOOLHOLDERS & CNMG/DNMG/WNMG INSERTS

|                          | ITEM NUMBER                    | KIT DISCRIPTION                | TOOL                          | INSERT (10 PCS.)    | KIT PRICE (USD)    | KIT PRICE (CAD) |
|--------------------------|--------------------------------|--------------------------------|-------------------------------|---------------------|--------------------|-----------------|
| FINISH                   | <a href="#">02874112</a>       | TRN 1.0 RH CNMG 432-MF2 TP1501 | DCLNR-16-4D                   | CNMG 432-MF2 TP1501 | \$164              | \$207           |
|                          | <a href="#">02874113</a>       | TRN 1.0 LH CNMG 432-MF2 TP1501 | DCLNL-16-4D                   | CNMG 432-MF2 TP1501 | \$164              | \$207           |
|                          | <a href="#">02874114</a>       | TRN 1.0 RH DNMG 432-MF2 TP1501 | DDJNR-16-4D-M                 | DNMG 432-MF2 TP1501 | \$194              | \$242           |
|                          | <a href="#">02874115</a>       | TRN 1.0 LH DNMG 432-MF2 TP1501 | DDJNL-16-4D-M                 | DNMG 432-MF2 TP1501 | \$194              | \$242           |
|                          | <a href="#">03172982</a>       | TRN 1.0 RH DNMG 432-M3 TP1501  | DDJNR-16-4D-M                 | DNMG 432-M3 TP1501  | \$174              | \$220           |
|                          | <a href="#">03172983</a>       | TRN 1.0 LH DNMG 432-M3 TP1501  | DDJNL-16-4D-M                 | DNMG 432-M3 TP1501  | \$174              | \$220           |
|                          | <a href="#">03172984</a>       | TRN 1.0 RH VNMG 332-M3 TP1501  | DVJNR-16-3C                   | VNMG 332-M3 TP1501  | \$164              | \$207           |
|                          | <a href="#">03172985</a>       | TRN 1.0 LH VNMG 332-M3 TP1501  | DVJNL-16-3C                   | VNMG 332-M3 TP1501  | \$164              | \$207           |
|                          | <a href="#">03172988</a>       | TRN 1.0 RH DNMG 432-M3 TP2501  | DDJNR-16-4D-M                 | DNMG 432-M3 TP2501  | \$174              | \$220           |
|                          | <a href="#">03172989</a>       | TRN 1.0 LH DNMG 432-M3 TP2501  | DDJNL-16-4D-M                 | DNMG 432-M3 TP2501  | \$174              | \$220           |
|                          | <a href="#">02864153</a>       | TRN 1.0 RH CNMG 432-M3 TP1501  | DCLNR-16-4D                   | CNMG 432-M3 TP1501  | \$164              | \$207           |
|                          | <a href="#">02864168</a>       | TRN 1.0 LH CNMG 432-M3 TP1501  | DCLNL-16-4D                   | CNMG 432-M3 TP1501  | \$164              | \$207           |
|                          | <a href="#">02580500</a>       | TRN 1.0 RH CNMG 432-MF5 TP2501 | DCLNR-16-4D                   | CNMG 432-MF5 TP2501 | \$164              | \$207           |
|                          | <a href="#">02580510</a>       | TRN 1.0 LH CNMG 432-MF5 TP2501 | DCLNL-16-4D                   | CNMG 432-MF5 TP2501 | \$164              | \$207           |
|                          | MEDIUM                         | <a href="#">02631961</a>       | TRN 1.0 RH CNMG 432-M5 TP1501 | DCLNR-16-4D         | CNMG 432-M5 TP1501 | \$164           |
| <a href="#">02631962</a> |                                | TRN 1.0 LH CNMG 432-M5 TP1501  | DCLNL-16-4D                   | CNMG 432-M5 TP1501  | \$164              | \$207           |
| <a href="#">02874116</a> |                                | TRN 1.0 RH WNMG 432-M5 TP1501  | DWLNR-16-4D                   | WNMG 432-M5 TP1501  | \$174              | \$220           |
| <a href="#">02874117</a> |                                | TRN 1.0 LH WNMG 432-M5 TP1501  | DWLNL-16-4D                   | WNMG 432-M5 TP1501  | \$174              | \$220           |
| <a href="#">02580520</a> |                                | TRN 1.0 RH WNMG 432-M3 TP2501  | DWLNR-16-4D                   | WNMG 432-M3 TP2501  | \$174              | \$220           |
| <a href="#">02580529</a> |                                | TRN 1.0 LH WNMG 432-M3 TP2501  | DWLNL-16-4D                   | WNMG 432-M3 TP2501  | \$174              | \$220           |
| <a href="#">03172980</a> |                                | TRN 1.0 RH WNMG 432-M3 TP1501  | DWLNR-16-4D                   | WNMG 432-M3 TP1501  | \$174              | \$220           |
| <a href="#">03172981</a> |                                | TRN 1.0 LH WNMG 432-M3 TP1501  | DWLNL-16-4D                   | WNMG 432-M3 TP1501  | \$174              | \$220           |
| <a href="#">03172987</a> |                                | TRN 1.0 RH CNMG 432-M3 TP2501  | DCLNR-16-4D                   | CNMG 432-M3 TP2501  | \$164              | \$207           |
| <a href="#">03172986</a> |                                | TRN 1.0 LH CNMG 432-M3 TP2501  | DCLNL-16-4D                   | CNMG 432-M3 TP2501  | \$164              | \$207           |
| <a href="#">02874118</a> |                                | TRN 1.0 RH CNMG 432-M5 TP2501  | DCLNR-16-4D                   | CNMG 432-M5 TP2501  | \$164              | \$207           |
| <a href="#">02874119</a> |                                | TRN 1.0 LH CNMG 432-M5 TP2501  | DCLNL-16-4D                   | CNMG 432-M5 TP2501  | \$164              | \$207           |
| <a href="#">02874120</a> |                                | TRN 1.0 RH WNMG 432-M5 TP2501  | DWLNR-16-4D                   | WNMG 432-M5 TP2501  | \$174              | \$220           |
| <a href="#">02874121</a> |                                | TRN 1.0 LH WNMG 432-M5 TP2501  | DWLNL-16-4D                   | WNMG 432-M5 TP2501  | \$174              | \$220           |
| <a href="#">02864155</a> |                                | TRN 1.0 RH CNMG 432-M3 TP3501  | DCLNR-16-4D                   | CNMG 432-M3 TP3501  | \$164              | \$207           |
| ROUGH                    | <a href="#">02864170</a>       | TRN 1.0 LH CNMG 432-M3 TP3501  | DCLNL-16-4D                   | CNMG 432-M3 TP3501  | \$164              | \$207           |
|                          | <a href="#">02864165</a>       | TRN 1.0 RH WNMG 432-M5 TP3501  | DWLNR-16-4D                   | WNMG 432-M5 TP3501  | \$174              | \$220           |
|                          | <a href="#">02864173</a>       | TRN 1.0 LH WNMG 432-M5 TP3501  | DWLNL-16-4D                   | WNMG 432-M5 TP3501  | \$174              | \$220           |
|                          | <a href="#">03172990</a>       | TRN 1.0 RH CNMG 432-M5 TP3501  | DCLNR-16-4D                   | CNMG 432-M5 TP3501  | \$164              | \$207           |
|                          | <a href="#">03172991</a>       | TRN 1.0 LH CNMG 432-M5 TP3501  | DCLNL-16-4D                   | CNMG 432-M5 TP3501  | \$164              | \$207           |
|                          | <a href="#">02874124</a>       | TRN 1.0 RH WNMG 433-MR7 TP2501 | DWLNR-16-4D                   | WNMG 433-MR7 TP2501 | \$174              | \$220           |
|                          | <a href="#">02874125</a>       | TRN 1.0 LH WNMG 433-MR7 TP2501 | DWLNL-16-4D                   | WNMG 433-MR7 TP2501 | \$174              | \$220           |
|                          | <a href="#">02864161</a>       | TRN 1.0 RH CNMG 433-MR7 TP3501 | DCLNR-16-4D                   | CNMG 433-MR7 TP3501 | \$164              | \$207           |
| <a href="#">02864171</a> | TRN 1.0 LH CNMG 433-MR7 TP3501 | DCLNL-16-4D                    | CNMG 433-MR7 TP3501           | \$164               | \$207              |                 |
| <a href="#">02874126</a> | TRN 1.0 RH WNMG 433-MR7 TP3501 | DWLNR-16-4D                    | WNMG 433-MR7 TP3501           | \$174               | \$220              |                 |
| <a href="#">02874127</a> | TRN 1.0 LH WNMG 433-MR7 TP3501 | DWLNL-16-4D                    | WNMG 433-MR7 TP3501           | \$174               | \$220              |                 |

Kits include one toolholder, ten inserts, and a wrench

For cutting data recommendations and more visit: [SECOTOOLS.COM](http://SECOTOOLS.COM)





## STAY COOL IN SUPERALLOYS

Particularly effective on titanium and high temp alloys where chip control is problematic, **Jetstream Tooling** is a revolutionary way to improve chip control in almost all materials. We recommend a minimum pump pressure of 200 psi, but you'll see dramatic improvements in chip control, tool life, and the opportunity to use increased cutting speeds as the pressure is increased to 1000 psi.

### FEATURED GRADES

- TS2000
- TS2500
- CP500



### JET 1.0 RIGHT & LEFT HAND TOOLHOLDERS & CNMP/CNMG/DNMP/DNMG INSERTS

|                          | ITEM NUMBER                    | KIT DESCRIPTION                | TOOL                | INSERT (10 PCS.)    | KIT PRICE (USD) | KIT PRICE (CAD) |
|--------------------------|--------------------------------|--------------------------------|---------------------|---------------------|-----------------|-----------------|
| FINISH                   | <a href="#">02915774</a>       | JET 1.0 LH CNMP 432-MF1 CP500  | DCLNL-16-4XJETI     | CNMP 432-MF1 CP500  | \$282           | \$360           |
|                          | <a href="#">02915767</a>       | JET 1.0 LH CNMP 432-MF1 TS2000 | DCLNL-16-4XJETI     | CNMP 432-MF1 TS2000 | \$282           | \$360           |
|                          | <a href="#">02915792</a>       | JET 1.0 LH DNMP 431-MF1 TS2000 | DDJNL-16-4XJETI     | DNMP 431-MF1 TS2000 | \$311           | \$395           |
|                          | <a href="#">02915794</a>       | JET 1.0 LH DNMP 432-MF1 TS2000 | DDJNL-16-4XJETI     | DNMP 432-MF1 TS2000 | \$311           | \$395           |
|                          | <a href="#">02915770</a>       | JET 1.0 RH CNMP 432-MF1 CP500  | DCLNR-16-4XJETI     | CNMP 432-MF1 CP500  | \$282           | \$360           |
|                          | <a href="#">02915761</a>       | JET 1.0 RH CNMP 432-MF1 TS2000 | DCLNR-16-4XJETI     | CNMP 432-MF1 TS2000 | \$282           | \$360           |
|                          | <a href="#">02915791</a>       | JET 1.0 RH DNMP 431-MF1 TS2000 | DDJNR-16-4XJETI     | DNMP 431-MF1 TS2000 | \$311           | \$395           |
|                          | <a href="#">02915793</a>       | JET 1.0 RH DNMP 432-MF1 TS2000 | DDJNR-16-4XJETI     | DNMP 432-MF1 TS2000 | \$311           | \$395           |
| MEDIUM                   | <a href="#">02915783</a>       | JET 1.0 LH CNMG 432-MF4 CP500  | DCLNL-16-4XJETI     | CNMG 432-MF4 CP500  | \$282           | \$360           |
|                          | <a href="#">02915779</a>       | JET 1.0 LH CNMG 432-MF4 TS2000 | DCLNL-16-4XJETI     | CNMG 432-MF4 TS2000 | \$282           | \$360           |
|                          | <a href="#">02915781</a>       | JET 1.0 LH CNMG 432-MF4 TS2500 | DCLNL-16-4XJETI     | CNMG 432-MF4 TS2500 | \$282           | \$360           |
|                          | <a href="#">02915782</a>       | JET 1.0 RH CNMG 432-MF4 CP500  | DCLNR-16-4XJETI     | CNMG 432-MF4 CP500  | \$282           | \$360           |
|                          | <a href="#">02915778</a>       | JET 1.0 RH CNMG 432-MF4 TS2000 | DCLNR-16-4XJETI     | CNMG 432-MF4 TS2000 | \$282           | \$360           |
|                          | <a href="#">02915780</a>       | JET 1.0 RH CNMG 432-MF4 TS2500 | DCLNR-16-4XJETI     | CNMG 432-MF4 TS2500 | \$282           | \$360           |
| ROUGH                    | <a href="#">02915787</a>       | JET 1.0 LH CNMG 432-MR3 CP500  | DCLNL-16-4XJETI     | CNMG 432-MR3 CP500  | \$282           | \$360           |
|                          | <a href="#">02915785</a>       | JET 1.0 LH CNMG 432-MR3 TS2000 | DCLNL-16-4XJETI     | CNMG 432-MR3 TS2000 | \$282           | \$360           |
|                          | <a href="#">02915790</a>       | JET 1.0 LH CNMG 432-MR4 TS2500 | DCLNL-16-4XJETI     | CNMG 432-MR4 TS2500 | \$282           | \$360           |
|                          | <a href="#">02915798</a>       | JET 1.0 LH DNMG 432-MR3 CP500  | DDJNL-16-4XJETI     | DNMG 432-MR3 CP500  | \$305           | \$383           |
|                          | <a href="#">02915796</a>       | JET 1.0 LH DNMG 432-MR3 TS2000 | DDJNL-16-4XJETI     | DNMG 432-MR3 TS2000 | \$311           | \$395           |
|                          | <a href="#">02915800</a>       | JET 1.0 LH DNMG 432-MR4 TS2500 | DDJNL-16-4XJETI     | DNMG 432-MR4 TS2500 | \$311           | \$395           |
|                          | <a href="#">02915786</a>       | JET 1.0 RH CNMG 432-MR3 CP500  | DCLNR-16-4XJETI     | CNMG 432-MR3 CP500  | \$282           | \$360           |
|                          | <a href="#">02915784</a>       | JET 1.0 RH CNMG 432-MR3 TS2000 | DCLNR-16-4XJETI     | CNMG 432-MR3 TS2000 | \$282           | \$360           |
|                          | <a href="#">02915789</a>       | JET 1.0 RH CNMG 432-MR4 TS2500 | DCLNR-16-4XJETI     | CNMG 432-MR4 TS2500 | \$282           | \$360           |
|                          | <a href="#">02915797</a>       | JET 1.0 RH DNMG 432-MR3 CP500  | DDJNR-16-4XJETI     | DNMG 432-MR3 CP500  | \$305           | \$383           |
| <a href="#">02915795</a> | JET 1.0 RH DNMG 432-MR3 TS2000 | DDJNR-16-4XJETI                | DNMG 432-MR3 TS2000 | \$311               | \$395           |                 |
| <a href="#">02915799</a> | JET 1.0 RH DNMG 432-MR4 TS2500 | DDJNR-16-4XJETI                | DNMG 432-MR4 TS2500 | \$311               | \$395           |                 |

Kits include one toolholder, ten inserts, and a wrench

# TURNING - MDT & GROOVING

## MDT & X4 KITS

### TURN, GROOVE, CUT-OFF, AND PROFILE WITH ONE INSERT

**MDT (Multi-Directional Turning & Grooving)** handles profile turning, deep grooving and cut-off operations with one tool for fewer tool changes and reduced tool stock. The unique **Secoloc™** v-shaped clamping delivers the superb stability and safety in addition to high productivity and performance. Applications include turning parts with many different diameters, complicated profiles and grooves, replacing the need for several standard, and special tools.

The **X4 system** incorporating 4-cutting-edge insert is optimized for cut-off and grooving primarily small parts like bars and tubes made from a wide variety of work materials. It consists of indexable tangential inserts and a highly stable clamp design with **Jetstream Tooling® Duo** coolant delivery providing optimal chip control and increased tool life. These strong, dependable system components achieve high accuracy, repeatability, productivity, and surface quality.

#### FEATURED GRADES

- CP500



Both incorporate CP500, a universal grade used in all materials.

#### MDT STANDARD & LONG REACH (LG) TOOLHOLDERS

|  | ITEM NUMBER              | KIT DESCRIPTION    | TOOL         | INSERT (10 PCS.)   | INSERT WIDTH (MM) | KIT PRICE (USD) | KIT PRICE (CAD) |
|--|--------------------------|--------------------|--------------|--------------------|-------------------|-----------------|-----------------|
|  | <a href="#">00093101</a> | MDT 1.00 RH 3MM    | CFIR 100 03D | LCMF 3MM FT, CP500 | 3                 | \$311           | \$395           |
|  | <a href="#">00093103</a> | MDT 1.00 RH 4MM    | CFIR 100 04D | LCMF 4MM FT, CP500 | 4                 | \$311           | \$395           |
|  | <a href="#">00093110</a> | MDT 1.00 RH 5MM    | CFIR 100 05D | LCMF 5MM FT, CP500 | 5                 | \$328           | \$413           |
|  | <a href="#">00093111</a> | MDT 1.00 RH 6MM    | CFIR 100 06D | LCMF 6MM FT, CP500 | 6                 | \$356           | \$448           |
|  | <a href="#">00093130</a> | MDT 1.00 RH LG 3MM | CFMR 100 03D | LCMR 3MM FT, CP500 | 3                 | \$266           | \$336           |
|  | <a href="#">00093139</a> | MDT 1.00 RH LG 4MM | CFMR 100 04D | LCMR 4MM FT, CP500 | 4                 | \$266           | \$336           |
|  | <a href="#">00093140</a> | MDT 1.00 RH LG 5MM | CFMR 100 05D | LCMR 5MM FT, CP500 | 5                 | \$277           | \$347           |
|  | <a href="#">00093150</a> | MDT 1.00 RH LG 6MM | CFMR 100 06D | LCMR 6MM FT, CP500 | 6                 | \$305           | \$383           |

#### X4 TOOLHOLDERS

|  | ITEM NUMBER              | KIT DESCRIPTION | TOOL             | INSERT (2 PCS.)                | INSERT WIDTH (IN) | KIT PRICE (USD) | KIT PRICE (CAD) |
|--|--------------------------|-----------------|------------------|--------------------------------|-------------------|-----------------|-----------------|
|  | <a href="#">02895243</a> | X4 1.00RH.031   | X4FR 1002503DJET | X4GK 2503009-A0031RN-MC, CP500 | 0.031             | \$300           | \$376           |
|  | <a href="#">02895245</a> | X4 1.00RH.047   | X4FR 1002503DJET | X4GK 2503009-A0047RN-MC, CP500 | 0.047             | \$300           | \$376           |
|  | <a href="#">02895248</a> | X4 1.00RH.062   | X4FR 1002503DJET | X4GK 2503019-A0062RN-MC, CP500 | 0.062             | \$300           | \$376           |
|  | <a href="#">02895249</a> | X4 1.00RH.072   | X4FR 1002503DJET | X4GK 2503019-A0072RN-MC, CP500 | 0.072             | \$300           | \$376           |
|  | <a href="#">02895250</a> | X4 1.00RH.094   | X4FR 1002503DJET | X4GK 2503019-A0094RN-MC, CP500 | 0.094             | \$300           | \$376           |
|  | <a href="#">02895251</a> | X4 1.00LH.031   | X4FL 1002503DJET | X4GK 2503009-A0031LN-MC, CP500 | 0.031             | \$300           | \$376           |
|  | <a href="#">02895254</a> | X4 1.00LH.047   | X4FL 1002503DJET | X4GK 2503009-A0047LN-MC, CP500 | 0.047             | \$300           | \$376           |
|  | <a href="#">02895256</a> | X4 1.00LH.062   | X4FL 1002503DJET | X4GK 2503019-A0062LN-MC, CP500 | 0.062             | \$300           | \$376           |
|  | <a href="#">02895257</a> | X4 1.00LH.072   | X4FL 1002503DJET | X4GK 2503019-A0072LN-MC, CP500 | 0.072             | \$300           | \$376           |
|  | <a href="#">02895258</a> | X4 1.00LH.094   | X4FL 1002503DJET | X4GK 2503019-A0094LN-MC, CP500 | 0.094             | \$300           | \$376           |

Kits include one 1" toolholder, ten inserts, and a wrench



# TURNING - CUT-OFF

## 150.10 CUT-OFF KITS

### SAY GOODBYE TO LONG, TANGLED CHIPS

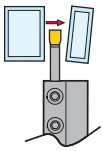
Get the right tools for high performance deep grooving and cut-off applications in low alloy steel and stainless steels. Diameters up to 5.5" are featured in each **150.10** cut-off tooling kit. You will receive one high speed steel cut-off blade that fits in a block type\* toolholder, ten high-productivity inserts with the efficient -16 chipbreaker. And, as a bonus, an improved wrench to make insert installation and removal fast and easy.

#### FEATURED GRADES

- TGP45
- CP600

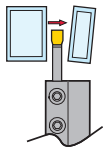


#### 150.10A BLADES & TGP45 INSERTS



| ITEM NUMBER              | KIT DESCRIPTION        | TOOL         | INSERT (10 PCS.)   | KIT PRICE (USD) | KIT PRICE (CAD) |
|--------------------------|------------------------|--------------|--------------------|-----------------|-----------------|
| <a href="#">02535302</a> | 150.10A 3MM TGP45 1.00 | 150.10A-20-3 | 150.10 3N-16-TGP45 | \$227           | \$282           |
| <a href="#">02535303</a> | 150.10A 3MM TGP45 1.25 | 150.10A-25-3 | 150.10 3N-16-TGP45 | \$232           | \$295           |
| <a href="#">02535304</a> | 150.10A 4MM TGP45 1.00 | 150.10A-20-4 | 150.10 4N-16-TGP45 | \$237           | \$300           |
| <a href="#">02535305</a> | 150.10A 4MM TGP45 1.25 | 150.10A-25-4 | 150.10 4N-16-TGP45 | \$243           | \$307           |

#### 150.10A BLADES & CP600 INSERTS



| ITEM NUMBER              | KIT DESCRIPTION        | TOOL         | INSERT (10 PCS.)   | KIT PRICE (USD) | KIT PRICE (CAD) |
|--------------------------|------------------------|--------------|--------------------|-----------------|-----------------|
| <a href="#">02535306</a> | 150.10A 3MM CP600 1.00 | 150.10A-20-3 | 150.10 3N-16-CP600 | \$227           | \$282           |
| <a href="#">02535307</a> | 150.10A 3MM CP600 1.25 | 150.10A-25-3 | 150.10 3N-16-CP600 | \$232           | \$295           |
| <a href="#">02535308</a> | 150.10A 4MM CP600 1.00 | 150.10A-20-4 | 150.10 4N-16-CP600 | \$237           | \$300           |
| <a href="#">02535309</a> | 150.10A 4MM CP600 1.25 | 150.10A-25-4 | 150.10 4N-16-CP600 | \$243           | \$307           |

Kits include one toolholder, ten inserts, and a wrench

\*Block type toolholder ordered separately. Blade fits in most competitors blocks

# THREADING

## EXTERNAL THREADING FOR STEEL AND STAINLESS STEEL KITS



### PRODUCE SUPERIOR THREAD SURFACE QUALITY

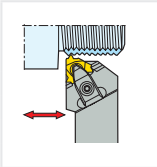
The Seco Tools “A1 & A2” insert chipbreakers is the optimizing geometry for steel and stainless steel, threading. Our **Snap-Tap®** threading kits feature the **HD holder** for maximum rigidity between insert and holder. Internal kits are also available.

#### FEATURED GRADES

- CP500

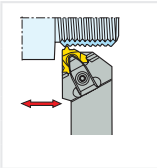


#### 3/4" EXTERNAL THREADING HOLDERS & CP500 INSERTS - STEEL



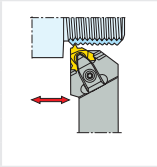
| ITEM NUMBER              | KIT DESCRIPTION           | TOOL            | INSERT (2 PCS.)   | TPI   | MM        | KIT PRICE (USD) | KIT PRICE (CAD) |
|--------------------------|---------------------------|-----------------|-------------------|-------|-----------|-----------------|-----------------|
| <a href="#">02517057</a> | THD .750 EXTA PARTIAL-A1  | CER 075 5-16QHD | 16ERA60-A1 CP500  | 48-16 | 0.50-1.50 | 159.00          | 201.00          |
| <a href="#">02517058</a> | THD .750 EXTA GPARTIAL-A1 | CER 075 5-16QHD | 16ERAG60-A1 CP500 | 48-8  | 0.50-3.00 | 159.00          | 201.00          |
| <a href="#">02517059</a> | THD .750 EXT GPARTIAL-A1  | CER 075 5-16QHD | 16ERG60-A1 CP500  | 14-8  | 1.75-3.00 | 159.00          | 201.00          |

#### 1" EXTERNAL THREADING HOLDERS & CP500 INSERTS - STEEL



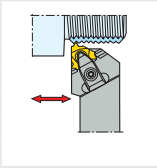
| ITEM NUMBER              | KIT DESCRIPTION           | TOOL            | INSERT (2 PCS.)   | TPI   | MM        | KIT PRICE (USD) | KIT PRICE (CAD) |
|--------------------------|---------------------------|-----------------|-------------------|-------|-----------|-----------------|-----------------|
| <a href="#">02517107</a> | THD 1.00 EXT APARTIAL-A1  | CER 100 6-16QHD | 16ERA60-A1 CP500  | 48-16 | 0.50-1.50 | \$169           | \$212           |
| <a href="#">02517108</a> | THD 1.00 EXT AGPARTIAL-A1 | CER 100 6-16QHD | 16ERAG60-A1 CP500 | 48-8  | 0.50-3.00 | \$169           | \$212           |
| <a href="#">02517109</a> | THD 1.00 EXT GPARTIAL-A1  | CER 100 6-16QHD | 16ERG60-A1 CP500  | 14-8  | 1.75-3.00 | \$169           | \$212           |

#### 3/4" EXTERNAL THREADING HOLDERS & CP500 INSERTS - STAINLESS STEEL



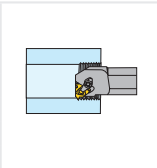
| ITEM NUMBER              | KIT DESCRIPTION           | TOOL            | INSERT (2 PCS.)   | TPI   | MM        | KIT PRICE (USD) | KIT PRICE (CAD) |
|--------------------------|---------------------------|-----------------|-------------------|-------|-----------|-----------------|-----------------|
| <a href="#">02517074</a> | THD .750 EXT APARTIAL-A2  | CER 075 5-16QHD | 16ERA60-A2 CP500  | 48-16 | 0.50-1.50 | \$159           | \$201           |
| <a href="#">02517075</a> | THD .750 EXT AGPARTIAL-A2 | CER 075 5-16QHD | 16ERAG60-A2 CP500 | 48-8  | 0.50-3.00 | \$159           | \$201           |
| <a href="#">02517076</a> | THD .750 EXT GPARTIAL-A2  | CER 075 5-16QHD | 16ERG60-A2 CP500  | 14-8  | 1.75-3.00 | \$159           | \$201           |

#### 1" EXTERNAL THREADING HOLDERS & CP500 INSERTS - STAINLESS STEEL



| ITEM NUMBER              | KIT DESCRIPTION           | TOOL            | INSERT (2 PCS.)   | TPI   | MM        | KIT PRICE (USD) | KIT PRICE (CAD) |
|--------------------------|---------------------------|-----------------|-------------------|-------|-----------|-----------------|-----------------|
| <a href="#">02517124</a> | THD 1.00 EXT APARTIAL-A2  | CER 100 6-16QHD | 16ERA60-A2 CP500  | 48-16 | 0.50-1.50 | \$169           | \$212           |
| <a href="#">02517125</a> | THD 1.00 EXT AGPARTIAL-A2 | CER 100 6-16QHD | 16ERAG60-A2 CP500 | 48-8  | 0.50-3.00 | \$169           | \$212           |
| <a href="#">02517126</a> | THD 1.00 EXT GPARTIAL-A2  | CER 100 6-16QHD | 16ERG60-A2 CP500  | 14-8  | 1.75-3.00 | \$169           | \$212           |

#### 0.75"-1.00" INTERNAL SNAP TAP/ MINI SNAP TAP HOLDERS & CP500 INSERTS - STAINLESS STEEL



| ITEM NUMBER              | KIT DESCRIPTION             | TOOL               | INSERT (2 PCS.)    | TPI   | MM        | KIT PRICE (USD) | KIT PRICE (CAD) |
|--------------------------|-----------------------------|--------------------|--------------------|-------|-----------|-----------------|-----------------|
| <a href="#">00093196</a> | THD .750 RH SNAPTAP KIT ID  | CNR 00075 7-16 AHD | 16NR AG60 A2 CP500 | 48-8  | 0.50-3.00 | \$193           | \$242           |
| <a href="#">00093180</a> | THD 1.00 RH SNAPTAP KIT ID  | CNR 00100 8-16 AHD | 16NR AG60 A2 CP500 | 48-8  | 0.50-3.00 | \$232           | \$295           |
| <a href="#">00093198</a> | THD .750 RH MINI SNAPTAP ID | SNR 000750-55-09A  | 09NR A60 A2 CP500  | 48-16 | 0.50-1.50 | \$182           | \$231           |

Kits include one toolholder, two inserts, and a wrench

Thread turning CNC code generation available on [secotools.com](http://secotools.com) product pages.

- Eliminate complicated programming
- Select the optimum holder and inserts
- Identify the best operating parameters

For cutting data recommendations and more visit: [SECOTOOLS.COM](http://SECOTOOLS.COM)





## BUNDLE & SAVE

Find a kit that best fits your operation from a popular selection of drills and indexable holemaking cutters grouped into cost saving kits that are ideal for any application.

For a full range, see our Holemaking Navigator or visit: [SECOTOOLS.COM](http://SECOTOOLS.COM)

# DRILLING HOLEMAKING KITS



# DRILLING/ HOLEMAKING

## PERFOMAX® KITS

### GET A DRILL BODY THAT STANDS THE TEST OF TIME

Redesigned from front to back, the all new **Perfomax** drill body flutes feature a recently developed anti-friction surface or **“wave patterned technology”** to minimize the contact between chips and the flutes for higher application security and chip control optimization. Laser-hardened fronts of the flutes up to 60 HRC allows the drill to withstand chip erosion for much longer periods of time, yielding up to 40% longer drill body life.

#### FEATURED GRADES

- DP3000
- T400D



#### SD523 DRILL BODY & INSERTS - 3 X D, R7 & R7-C SHANKS, INCH

|   | ITEM NUMBER | KIT DESCRIPTION             | KIT CONTENTS            |           |           |                   | KIT PRICE (USD)      | KIT PRICE (CAD) |                  |
|---|-------------|-----------------------------|-------------------------|-----------|-----------|-------------------|----------------------|-----------------|------------------|
|   |             |                             | DRILL BODY              | DRILL DIA | SHANK DIA | INSERTS (10 PCS)  |                      |                 | INSERTS (10 PCS) |
| P | 03171443    | NG_PERFOMAX_625_3XD_KIT     | SD523-0625-188-1000R7   | 0.625     | 1.00      | SPGX0502-C1 T400D | SCGX050204-P2 DP3000 | \$592           | \$757            |
|   | 03171444    | NG_PERFOMAX_625_3XD_C_KIT   | SD523-0625-188-1000R7-C | 0.625     | 1.00      | SPGX0502-C1 T400D | SCGX050204-P2 DP3000 | \$592           | \$757            |
|   | 03171445    | NG_PERFOMAX_750_3XD_KIT     | SD523-0750-225-1000R7   | 0.750     | 1.00      | SPGX0602-C1 T400D | SCGX050204-P2 DP3000 | \$621           | \$797            |
|   | 03171446    | NG_PERFOMAX_750_3XD_C_KIT   | SD523-0750-225-1000R7-C | 0.750     | 1.00      | SPGX0602-C1 T400D | SCGX050204-P2 DP3000 | \$621           | \$797            |
|   | 03171447    | NG_PERFOMAX_875_3XD_KIT     | SD5023-0875-263-1000R7  | 0.875     | 1.00      | SPGX0703-C1 T400D | SCGX060204-P2 DP3000 | \$639           | \$815            |
|   | 03171448    | NG_PERFOMAX_875_3XD_C_KIT   | SD523-0875-263-1000R7-C | 0.875     | 1.00      | SPGX0703-C1 T400D | SCGX060204-P2 DP3000 | \$639           | \$815            |
|   | 03171449    | NG_PERFOMAX_1.000_3XD_KIT   | SD523-1000-300-1250R7   | 1.000     | 1.25      | SPGX0703-C1 T400D | SCGX070308-P2 DP3000 | \$655           | \$838            |
|   | 03171450    | NG_PERFOMAX_1.000_3XD_C_KIT | SD523-1000-300-1250R7-C | 1.000     | 1.25      | SPGX0703-C1 T400D | SCGX070308-P2 DP3000 | \$655           | \$838            |
|   | 03171451    | NG_PERFOMAX_1.125_3XD_KIT   | SD523-1125-338-1250R7   | 1.125     | 1.25      | SPGX0903-C1 T400D | SCGX09T308-P2 DP3000 | \$740           | \$948            |
|   | 03171452    | NG_PERFOMAX_1.125_3XD_C_KIT | SD523-1125-338-1250R7-C | 1.125     | 1.25      | SPGX0903-C1 T400D | SCGX09T308-P2 DP3000 | \$740           | \$948            |
|   | 03171453    | NG_PERFOMAX_1.250_3XD_KIT   | SD523-1250-375-1500R7   | 1.250     | 1.50      | SPGX11T3-C1 T400D | SCGX09T308-P2 DP3000 | \$751           | \$960            |
|   | 03171454    | NG_PERFOMAX_1.250_3XD_C_KIT | SD523-1250-375-1500R7-C | 1.250     | 1.50      | SPGX11T3-C1 T400D | SCGX09T308-P2 DP3000 | \$751           | \$960            |
|   | 03171455    | NG_PERFOMAX_1.375_3XD_KIT   | SD523-1375-413-1500R7   | 1.375     | 1.50      | SPGX11T3-C1 T400D | SCGX11T308-P2 DP3000 | \$813           | \$1,040          |
|   | 03171456    | NG_PERFOMAX_1.375_3XD_C_KIT | SD523-1375-413-1500R7-C | 1.375     | 1.50      | SPGX11T3-C1 T400D | SCGX11T308-P2 DP3000 | \$813           | \$1,040          |
|   | 03171457    | NG_PERFOMAX_1.500_3XD_KIT   | SD523-1500-450-1500R7   | 1.500     | 1.50      | SPGX12T3-C1 T400D | SCGX11T308-P2 DP3000 | \$830           | \$1,070          |
|   | 03171458    | NG_PERFOMAX_1.500_3XD_C_KIT | SD523-1500-450-1500R7-C | 1.500     | 1.50      | SPGX12T3-C1 T400D | SCGX11T308-P2 DP3000 | \$830           | \$1,070          |

#### SD524 DRILL BODY & INSERTS - 4 X D, R7 & R7-C SHANKS, INCH

|   | ITEM NUMBER | KIT DESCRIPTION             | KIT CONTENTS            |           |           |                   | KIT PRICE (USD)      | KIT PRICE (CAD) |                  |
|---|-------------|-----------------------------|-------------------------|-----------|-----------|-------------------|----------------------|-----------------|------------------|
|   |             |                             | DRILL BODY              | DRILL DIA | SHANK DIA | INSERTS (10 PCS)  |                      |                 | INSERTS (10 PCS) |
| P | 03171459    | NG_PERFOMAX_625_4XD_KIT     | SD524-0625-250-1000R7   | 0.625     | 1.00      | SPGX0502-C1 T400D | SCGX050204-P2 DP3000 | \$626           | \$802            |
|   | 03171460    | NG_PERFOMAX_625_4XD_C_KIT   | SD524-0625-250-1000R7-C | 0.625     | 1.00      | SPGX0502-C1 T400D | SCGX050204-P2 DP3000 | \$626           | \$802            |
|   | 03171461    | NG_PERFOMAX_750_4XD_KIT     | SD524-0750-300-1000R7   | 0.750     | 1.00      | SPGX0602-C1 T400D | SCGX050204-P2 DP3000 | \$666           | \$855            |
|   | 03171462    | NG_PERFOMAX_750_4XD_C_KIT   | SD524-0750-300-1000R7-C | 0.750     | 1.00      | SPGX0602-C1 T400D | SCGX050204-P2 DP3000 | \$666           | \$855            |
|   | 03171463    | NG_PERFOMAX_875_4XD_KIT     | SD524-0875-350-1000R7   | 0.875     | 1.00      | SPGX0703-C1 T400D | SCGX060204-P2 DP3000 | \$684           | \$873            |
|   | 03171464    | NG_PERFOMAX_875_4XD_C_KIT   | SD524-0875-350-1000R7-C | 0.875     | 1.00      | SPGX0703-C1 T400D | SCGX060204-P2 DP3000 | \$684           | \$873            |
|   | 03171465    | NG_PERFOMAX_1.000_4XD_KIT   | SD524-1000-400-1250R7   | 1.000     | 1.25      | SPGX0703-C1 T400D | SCGX070308-P2 DP3000 | \$700           | \$895            |
|   | 03171466    | NG_PERFOMAX_1.000_4XD_C_KIT | SD524-1000-400-1250R7-C | 1.000     | 1.25      | SPGX0703-C1 T400D | SCGX070308-P2 DP3000 | \$700           | \$895            |
|   | 03171467    | NG_PERFOMAX_1.125_4XD_KIT   | SD524-1125-450-1250R7   | 1.125     | 1.25      | SPGX0903-C1 T400D | SCGX09T308-P2 DP3000 | \$791           | \$1,010          |
|   | 03171468    | NG_PERFOMAX_1.125_4XD_C_KIT | SD524-1125-450-1250R7-C | 1.125     | 1.25      | SPGX0903-C1 T400D | SCGX09T308-P2 DP3000 | \$791           | \$1,010          |
|   | 03171469    | NG_PERFOMAX_1.250_4XD_KIT   | SD524-1250-500-1500R7   | 1.250     | 1.50      | SPGX11T3-C1 T400D | SCGX09T308-P2 DP3000 | \$802           | \$1,030          |
|   | 03171470    | NG_PERFOMAX_1.250_4XD_C_KIT | SD524-1250-500-1500R7-C | 1.250     | 1.50      | SPGX11T3-C1 T400D | SCGX09T308-P2 DP3000 | \$802           | \$1,030          |
|   | 03171471    | NG_PERFOMAX_1.375_4XD_KIT   | SD524-1375-550-1500R7   | 1.375     | 1.50      | SPGX11T3-C1 T400D | SCGX11T308-P2 DP3000 | \$853           | \$1,100          |
|   | 03171472    | NG_PERFOMAX_1.375_4XD_C_KIT | SD524-1375-550-1500R7-C | 1.375     | 1.50      | SPGX11T3-C1 T400D | SCGX11T308-P2 DP3000 | \$853           | \$1,100          |
|   | 03171473    | NG_PERFOMAX_1.500_4XD_KIT   | SD524-1500-600-1500R7   | 1.500     | 1.50      | SPGX12T3-C1 T400D | SCGX11T308-P2 DP3000 | \$893           | \$1,140          |
|   | 03171474    | NG_PERFOMAX_1.500_4XD_C_KIT | SD524-1500-600-1500R7-C | 1.500     | 1.50      | SPGX12T3-C1 T400D | SCGX11T308-P2 DP3000 | \$893           | \$1,140          |

Kits include one cutter body, 10 center, and 10 peripheral inserts

Note: R7 shanks for rotating applications / R7-C shanks for stationary application

For cutting data recommendations and more visit: [SECOTOOLS.COM](http://SECOTOOLS.COM)







# DRILLING/ HOLEMAKING

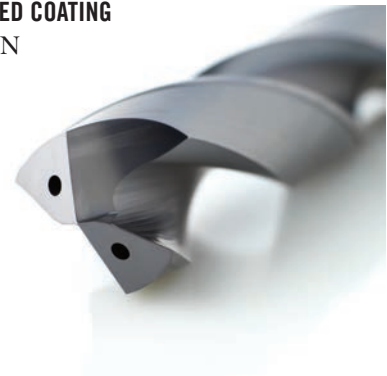
## FEEDMAX™ KITS

### OPTIMIZE YOUR STEEL DRILLING

Increase productivity up to 35% with longer tool life, thanks to the combination of a new geometry and an advanced coating technology. The all new **Feedmax -P** drills for excellence in steel and iron drilling now have strong, straight cutting edges with coolant holes close by for pinpointed cutting edge cooling. Design features such as increased corner chamfers protect the drill point and provide exceptional chip control and evacuation to ensure application security. Drill more holes in a shorter amount of time and use fewer drills to do so.

#### FEATURED COATING

- TiAIN



#### TAP DRILLS - 5 x D

|   | ITEM NUMBER              | KIT DESCRIPTION        | KIT CONTENTS (INCH)    |           |           | KIT PRICE (USD) | KIT PRICE (CAD) |
|---|--------------------------|------------------------|------------------------|-----------|-----------|-----------------|-----------------|
|   |                          |                        | DRILLS (2 PCS)         | DRILL DIA | SHANK DIA |                 |                 |
| P | <a href="#">03171482</a> | NG_FEEDMAX_8-32_KIT    | SD205A-0350-023-06R1-P | 0.138     | 0.236     | \$198           | \$254           |
|   | <a href="#">03171483</a> | NG_FEEDMAX_10-24_KIT   | SD205A-0390-029-06R1-P | 0.154     | 0.236     | \$198           | \$254           |
|   | <a href="#">03171484</a> | NG_FEEDMAX_1/4-20_KIT  | SD205A-0510-035-06R1-P | 0.201     | 0.236     | \$198           | \$254           |
|   | <a href="#">03171485</a> | NG_FEEDMAX_5/16-18_KIT | SD205A-0660-043-08R1-P | 0.260     | 0.315     | \$232           | \$295           |
|   | <a href="#">03171486</a> | NG_FEEDMAX_3/8-16_KIT  | SD205A-0800-043-08R1-P | 0.315     | 0.315     | \$232           | \$295           |
|   | <a href="#">03171487</a> | NG_FEEDMAX_7/16-14_KIT | SD205A-0990-049-10R1-P | 0.390     | 0.394     | \$282           | \$360           |
|   | <a href="#">03171488</a> | NG_FEEDMAX_1/2-13_KIT  | SD205A-1080-056-12R1-P | 0.425     | 0.472     | \$384           | \$491           |

Kits include two drills

#### TAP DRILLS - 5 x D

|   | ITEM NUMBER              | KIT DESCRIPTION    | KIT CONTENTS (METRIC)  |           |           | KIT PRICE (USD) | KIT PRICE (CAD) |
|---|--------------------------|--------------------|------------------------|-----------|-----------|-----------------|-----------------|
|   |                          |                    | DRILLS (2 PCS)         | DRILL DIA | SHANK DIA |                 |                 |
| P | <a href="#">03171475</a> | NG_FEEDMAX_M4_KIT  | SD205A-0330-023-06R1-P | 3.3       | 6         | \$198           | \$254           |
|   | <a href="#">03171476</a> | NG_FEEDMAX_M5_KIT  | SD205A-0420-029-06R1-P | 4.2       | 6         | \$198           | \$254           |
|   | <a href="#">03171477</a> | NG_FEEDMAX_M6_KIT  | SD205A-0500-035-06R1-P | 5.0       | 6         | \$198           | \$254           |
|   | <a href="#">03171478</a> | NG_FEEDMAX_M8_KIT  | SD205A-0680-043-08R1-P | 6.8       | 8         | \$232           | \$295           |
|   | <a href="#">03171479</a> | NG_FEEDMAX_M10_KIT | SD205A-0850-049-10R1-P | 8.5       | 10        | \$282           | \$360           |
|   | <a href="#">03171480</a> | NG_FEEDMAX_M12_KIT | SD205A-1020-056-12R1-P | 10.2      | 12        | \$384           | \$491           |
|   | <a href="#">03171481</a> | NG_FEEDMAX_M14_KIT | SD205A-1200-056-12R1-P | 12.0      | 12        | \$384           | \$491           |

Kits include two drills

Note: -P Geometry can also be used in iron and hardened steel



## IMPROVE CHIP FORMATION AND REDUCE BUILD-UP

Crownloc® Plus drills are the economical, convenient way to achieve the holemaking tolerance of a brazed drill with superior metal removal rates. These drills don't need reconditioning, so they can be more cost-effective. The TiAlN coating on the exchangeable head and 10% micrograin substrate serve to increase toughness and wear resistance, while reducing the potential for edge build up.

- Optimized geometry for improved chip formation and enhanced centering capability for different work piece materials
- P geometry for drilling in steel and iron

### FEATURED GRADES

- SD400



### CROWNLOC PLUS SD403, 3 x D & SD400 TIPS

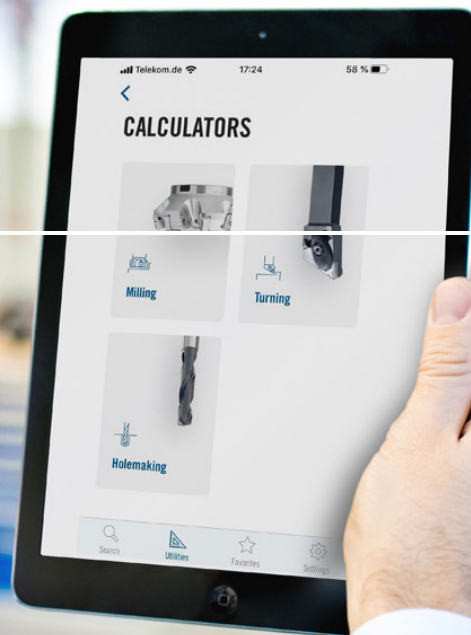
|   | ITEM NUMBER | KIT DESCRIPTION           | KIT CONTENTS                |           |           |                   | KIT PRICE (USD) | KIT PRICE (CAD) |
|---|-------------|---------------------------|-----------------------------|-----------|-----------|-------------------|-----------------|-----------------|
|   |             |                           | DRILL BODY                  | DRILL DIA | SHANK DIA | DRILL TIP (2 PCS) |                 |                 |
| P | 03171422    | CROWNLOC_PLUS.500_3XD_KIT | SD403-12.50/12.99-39-0625R1 | 0.500     | 0.625     | SD400-12.70-P     | \$435           | \$550           |
|   | 03171423    | CROWNLOC_PLUS.532_3XD_KIT | SD403-13.00/13.99-42-0625R1 | 0.532     | 0.625     | SD400-13.5-P      | \$441           | \$560           |
|   | 03171424    | CROWNLOC_PLUS.562_3XD_KIT | SD403-14.00/14.99-45-0625R1 | 0.562     | 0.625     | SD400-14.288-P    | \$452           | \$574           |
|   | 03171425    | CROWNLOC_PLUS.594_3XD_KIT | SD403-15.00/15.99-48-0625R1 | 0.594     | 0.625     | SD400-15.08-P     | \$470           | \$596           |
|   | 03171426    | CROWNLOC_PLUS.625_3XD_KIT | SD403-15.00/15.99-48-0625R1 | 0.625     | 0.625     | SD400-15.875-P    | \$470           | \$596           |
|   | 03171427    | CROWNLOC_PLUS.656_3XD_KIT | SD403-16.00/16.99-51-0750R1 | 0.656     | 0.750     | SD400-16.669-P    | \$491           | \$625           |
|   | 03171428    | CROWNLOC_PLUS.687_3XD_KIT | SD403-17.00/17.99-54-0750R1 | 0.687     | 0.750     | SD400-17.463-P    | \$491           | \$625           |
|   | 03171430    | CROWNLOC_PLUS.719_3XD_KIT | SD403-18.00/18.99-57-0750R1 | 0.719     | 0.750     | SD400-18.256-P    | \$548           | \$693           |
|   | 03171431    | CROWNLOC_PLUS.750_3XD_KIT | SD403-19.00/19.99-60-0750R1 | 0.750     | 0.750     | SD400-19.05-P     | \$553           | \$705           |
|   | 03171432    | CROWNLOC_PLUS.781_3XD_KIT | SD403-19.00/19.99-60-0750R1 | 0.781     | 0.750     | SD400-19.844-P    | \$553           | \$705           |

### CROWNLOC PLUS SD405, 5 x D & SD400 TIPS

|   | ITEM NUMBER | KIT DESCRIPTION           | KIT CONTENTS                 |           |           |                   | KIT PRICE (USD) | KIT PRICE (CAD) |
|---|-------------|---------------------------|------------------------------|-----------|-----------|-------------------|-----------------|-----------------|
|   |             |                           | DRILL BODY                   | DRILL DIA | SHANK DIA | DRILL TIP (2 PCS) |                 |                 |
| P | 03171433    | CROWNLOC_PLUS.500_5XD_KIT | SD405-12.50/12.99-65-0625R1  | 0.500     | 0.625     | SD400-12.70-P     | \$485           | \$618           |
|   | 03171434    | CROWNLOC_PLUS.532_5XD_KIT | SD405-13.00/13.99-70-0625R1  | 0.532     | 0.625     | SD400-13.5-P      | \$491           | \$625           |
|   | 03171435    | CROWNLOC_PLUS.562_5XD_KIT | SD405-14.00/14.99-75-0625R1  | 0.562     | 0.625     | SD400-14.288-P    | \$504           | \$635           |
|   | 03171436    | CROWNLOC_PLUS.594_5XD_KIT | SD405-15.00/15.99-80-0625R1  | 0.594     | 0.625     | SD400-15.08-P     | \$519           | \$659           |
|   | 03171437    | CROWNLOC_PLUS.625_5XD_KIT | SD405-15.00/15.99-80-0625R1  | 0.625     | 0.625     | SD400-15.875-P    | \$519           | \$659           |
|   | 03171438    | CROWNLOC_PLUS.656_5XD_KIT | SD405-16.00/16.99-85-0750R1  | 0.656     | 0.750     | SD400-16.669-P    | \$543           | \$687           |
|   | 03171439    | CROWNLOC_PLUS.687_5XD_KIT | SD405-17.00/17.99-90-0750R1  | 0.687     | 0.750     | SD400-17.463-P    | \$543           | \$687           |
|   | 03171440    | CROWNLOC_PLUS.719_5XD_KIT | SD405-18.00/18.99-95-0750R1  | 0.719     | 0.750     | SD400-18.256-P    | \$611           | \$773           |
|   | 03171441    | CROWNLOC_PLUS.750_5XD_KIT | SD405-19.00/19.99-100-0750R1 | 0.750     | 0.750     | SD400-19.05-P     | \$616           | \$779           |
|   | 03171442    | CROWNLOC_PLUS.781_5XD_KIT | SD405-19.00/19.99-100-0750R1 | 0.781     | 0.750     | SD400-19.844-P    | \$616           | \$779           |

Kits include one drill body, 2 tips, and a wrench

**EVERYTHING  
SECO TOOLS  
AT YOUR  
FINGERTIPS**



# **ACHIEVE MORE WITH YOUR METAL CUTTING SOLUTIONS SECO ASSISTANT APP**

No internet? No problem. When there's no internet connection you can search Seco products; calculate feeds, speed, material removal rates for any brand, as well search and compare indexable inserts from other manufacturers.

Seco Assistant, an all-in-one mobile app, makes it easy to find metal cutting solutions solutions that work for you without leaving the production floor.

Achieve all of your indexable application needs:

- Keep current data on our over 30,000 standard products in your pocket
- Quickly share lists of Favorite tools with your team
- Easily access product details by scanning the bar code on Seco Tools packaging
- Utilize offline features such as machining calculators



For technical assistance, call:  
**1-800-TEC-TEAM**

For customer service, call:  
**1-248-528-5220**

**SECO TOOLS, LLC**  
NORTH AMERICAN HEADQUARTERS  
2805 Bellingham Drive  
Troy, MI 48083  
248-528-5200

**SECOTOOLS.COM**

P-2202-2500 GT22-100  
Copyright © 2022 Seco Tools, LLC  
Printed in USA. All rights reserved.

Follow Seco Tools on Twitter, Facebook, YouTube, and LinkedIn. Stay up to date on new products and technology, special events, promotions, and more.

**@SECOTOOLS**  
**@SECOTOOLSUS**

